

95
YACHT



SEEK

*We believe that to stop seeking
in life is to stop living.*

*Which is why we never let the sun set
without knowing we looked for more.*

The most innovative design.

Exhilarating engineering.

Jaw-dropping performance.

Breathtaking attention to detail.

*Awe-inspiring motoryachts to make the
heart race and the soul sing.*

*By daring to go where others don't, we'll
take you to places others only dream of.*

*To do this, we constantly
seek perfection.*

*And then, when we think
we've found it?*

We seek more.

MORE



CONTENTS

<i>Seeking A Dream, Making A World</i>	<i>04</i>
<i>Excellence, Always</i>	<i>06</i>
<i>Through Innovation Comes Exhilaration</i>	<i>08</i>
<i>100 over 100FT</i>	<i>10</i>
<i>Exceptional Carfit, Proudly Handcrafted</i>	<i>12</i>
<i>Make It Your Signature</i>	<i>14</i>
<i>95 Yacht</i>	<i>16</i>
<i>General Arrangements</i>	<i>24</i>
<i>Specifications</i>	<i>26</i>
<i>Awards & Achievements</i>	<i>30</i>
<i>Acknowledgements</i>	<i>31</i>



SEEKING A DREAM, MAKING A WORLD

In 1969, Robert and John Braithwaite were two brothers with a dream – to create a boat to surpass anything made before.

That same year, the Braithwaites built the first Sunseeker. It was the seed of a whole new world.

Steadily and surely, the brothers grew their business from their small shipyard in Poole on the south coast of England.

Always seeking better boat building techniques, each craft became more ambitious, more creative – and consequently more successful – than the last.

Now, 50 years on, Sunseeker International has over 80 dealerships networked around the world, delivering over 150 boats a year globally.



EXCELLENCE. ALWAYS

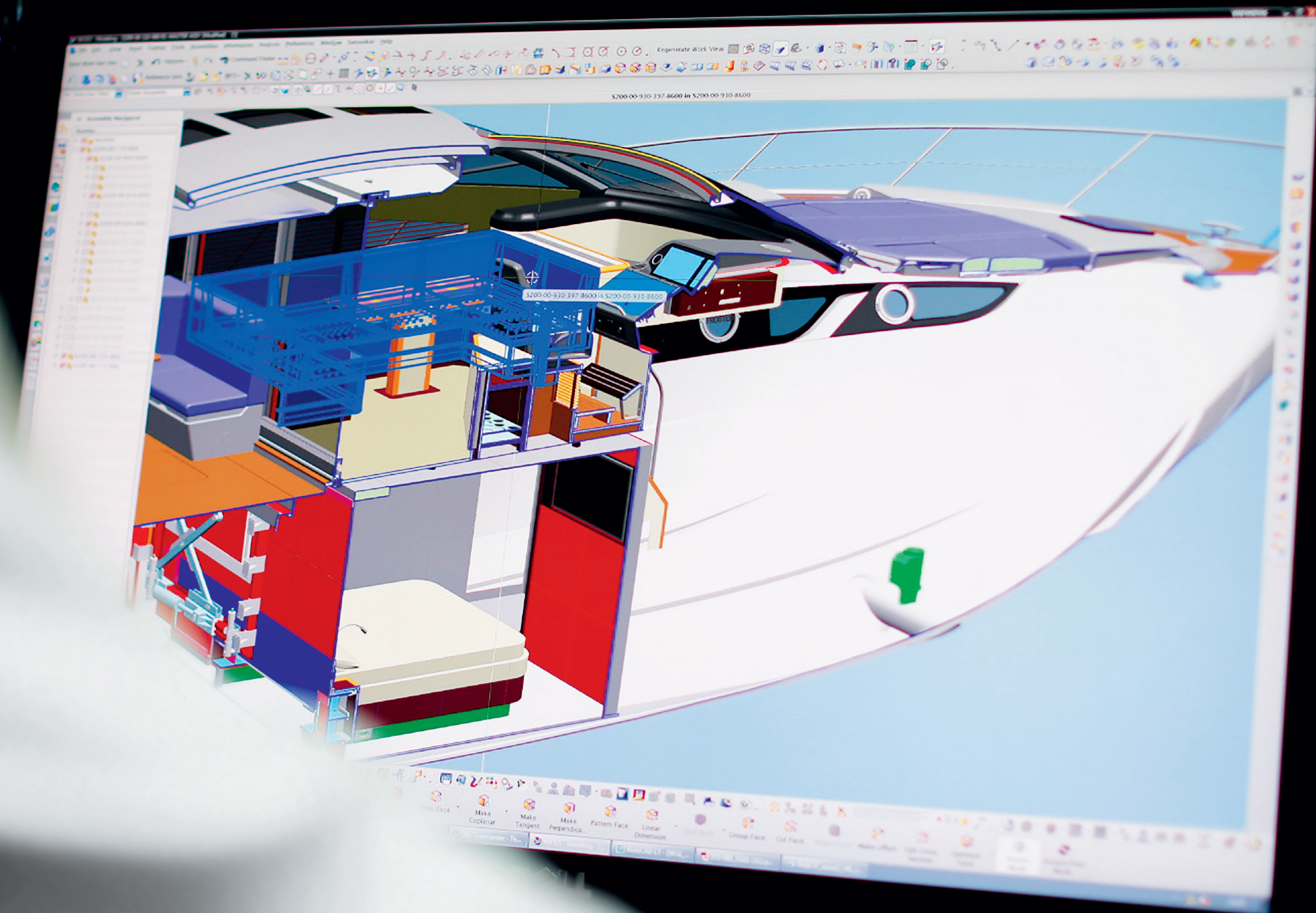
When the Braithwaite brothers started up the engine of a small, open-cockpit speedboat in 1969, it wasn't just the Hostess 17 that roared into life. It was a new standard of yacht making.

Today, their passion to exceed boundaries is as strong as ever before, brought to life by a team of over 2,000 highly skilled designers, engineers and master craftsmen.

Bold new creations like the 155 Yacht keep us pushing our standards ever further, year upon year.

Just as we have always done.

The flagship 155 Yacht is the epitome of our tireless precision and attention to detail. It is this ceaseless desire to always excel in every detail that gives every Sunseeker its vital presence, performance and luxury.



THROUGH INNOVATION COMES EXHILARATION

Intelligent innovation is the philosophy that rules everything we create.

It is why we have become the only manufacturer to produce a luxury yacht range from 50 to 155ft under one name.

Our in-house design team, still steadfastly guided by John Braithwaite, is at the vanguard of marine design, technology and engineering excellence.

It is a dream team with the incomparable vision, confidence and skill to continually innovate our boat design – to create ever more thrilling experiences and adventures. Invention for inspiration.

It is the simple reason why customers the world over await the next Sunseeker with such anticipation.

Because the world knows every new Sunseeker promises innovation that truly exhilarates.



100 OVER 100FT

It is a landmark that signals a bold new age for Sunseeker.

A milestone that measures the sheer breadth of our range of exceptional yachts, built upon a heritage of innovation and craftsmanship spanning 50 years.

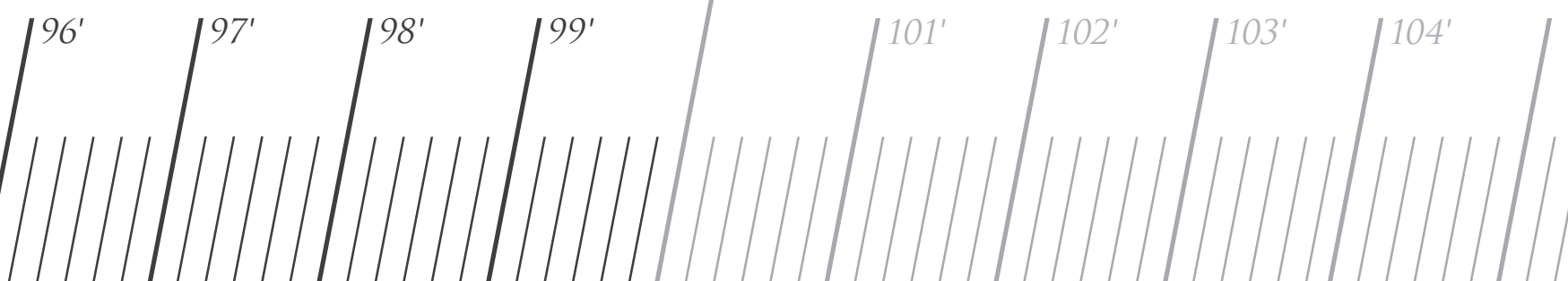
On 9 September 2015, we held an exclusive celebration at Cannes Yachting Festival to recognise the delivery of our 100th luxury performance yacht in the 100ft+ superyacht category.

It was summer 2000 that we first launched a model over 100ft long – the unforgettable 105 Yacht, which went on to win two of the world's most prestigious accolades in the International Superyacht Design awards. It was the first step in our journey to become a major player in the superyacht sector.

Amazingly, it has taken just 15 years to reach our newest milestone.

Today, we produce around seven 100ft+ yachts every year. Our range now encompasses boats from the powerful 101 Sport Yacht to the majestic flagship 155 Yacht, with a world of bespoke options in between.

And of course we're always seeking more. With each new creation, a new best is born. Blending cutting-edge technology with traditional handcraft to create yachts that inspire and delight.





EXCEPTIONAL CRAFT, PROUDLY HANDCRAFTED

A hawk's eye, expert hands and a devilish attention to detail.

Passed from generation to generation, these are the most important skills required to make a Sunseeker.

In an age of digital production and automated assembly, we stay committed to creating hand-built, hand-finished boats – for one simple reason.

There is no better way to craft such an exceptional product.

Inside and out, the extraordinary detail, finish and sheer artistry of our yachts can only be achieved by human qualities.

And, most importantly, no machine can ever give our boats such spirit, or take such pride in their creation – a vitality passed on to every owner.



MAKE IT YOUR SIGNATURE

Your signature is truly unique.

No-one else has one quite the same. And so it should be with your very own Sunseeker.

Which is why we have our truly unique Bespoke service, offered for yachts 100ft and above. It offers you something truly unique. A blank sheet of paper for you to create a yacht personalised in any way you wish.

From floor plans to unique furnishings, your imagination and passion can be fully expressed.

With some of Britain's finest in-house interior designers at your side, you can choose materials, fabrics and finishes to reflect your unique desires and individuality.

To give your Sunseeker something no-one else can. Your signature.

Bespoke



95 YACHT

Length overall	28.06m	92'1"
Beam	6.55m	21'6"
Draft @ full load – (incl. props)	2.13m	7'0"
Displacement – (@ normal half load)	84,700kg	186,340lb
Fuel capacity	12,000 litres	3,170 US gal.
Fresh water capacity	1,750 litres	462 US gal.
Black water capacity	435 litres	115 US gal.
Grey water capacity	1,000 litres	264 US gal.
Accommodation	Up to 10 guests & up to 4 crew members	
Engine options	Up to 3,900PS	
Performance	Up to 26 knots	
Range @ 10 knots	Up to 1,250 nautical miles	
Drives	Shaft	

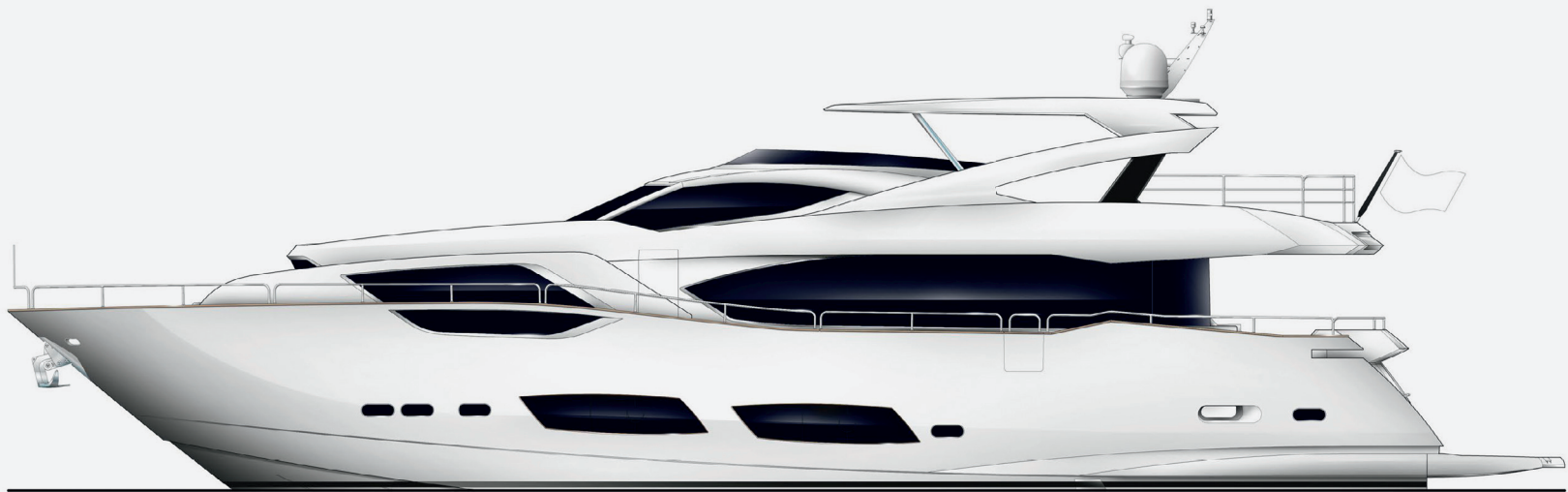




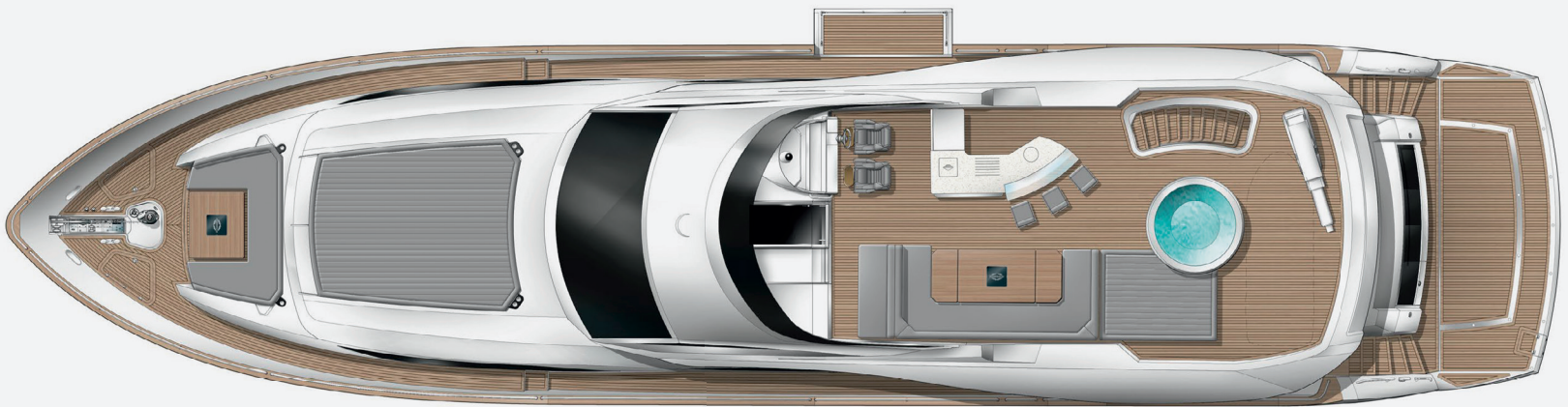


GENERAL ARRANGEMENTS

95 YACHT



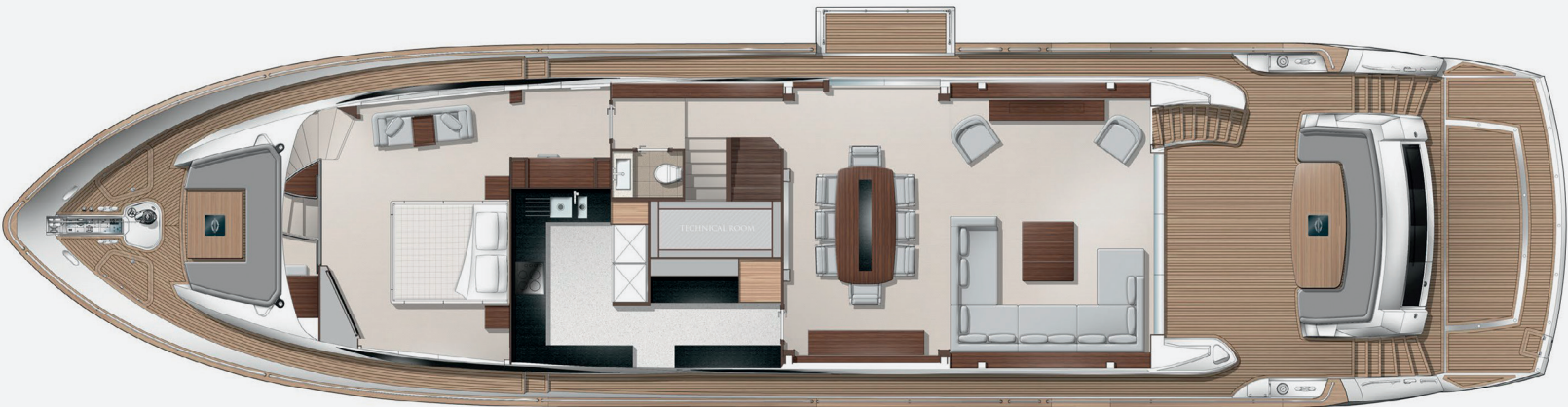
SIDE PROFILE



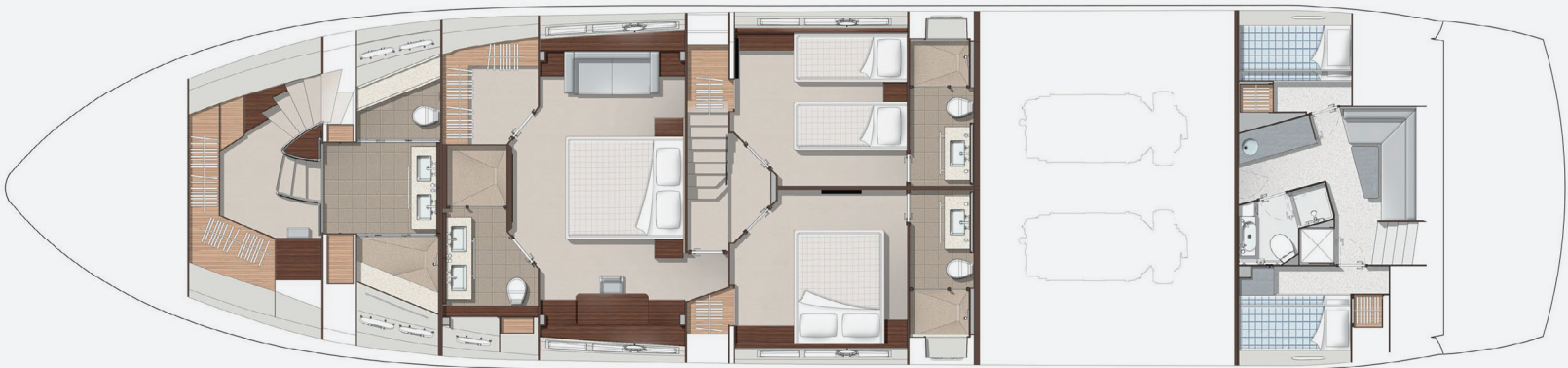
FLYBRIDGE OPTION
Shown with spa tub arrangement



WHEELHOUSE



MAIN DECK
Shown with optional starboard side patio door, bulwark balcony and upgraded galley refrigeration



LOWER DECK
Shown with optional port side double guest cabin

STANDARD
SPECIFICATIONS

1. Construction Hand-laid GRP Gel coat including stripes Vinylester skin coat with powderbound mat Stitched multi-axial reinforced single-skin bottom Balsa-cored hull topsides PVC foam-cored deck and superstructure Hull stiffened with longitudinal stringers supported by transverse bulkheads and floors	Trim tab control Horn control Waterproof plug and socket 12v Waterproof USB charger outlet	Two marine speakers controlled via Sonos Wetbar unit Sink in wetbar unit Icemaker in wetbar unit Refrigerator in wetbar unit Fire extinguisher in wetbar locker	Storage cupboards Fitted carpet Access to galley Access to master stateroom Access to day head Stairs leading to guest cabins	Fuel display 12v socket outlet USB charger outlet Double 220v AC sockets LED overhead lighting (24v) Monitoring panel for fire detection system Windscreen wiper and washer controls synchronized and multi speed Air conditioning Screen demister Sofa observation seat Chart stowage area Glass holder Fire extinguisher	13. Master Stateroom Dressing Room Hanging rails Shelves Dressing table Stool for dressing table LED overhead lighting (24v) AC socket Fitted carpet	16. Midships VIP Stateroom (4 Cabin layout) If 5 Cabin layout then this cabin is replaced with two cabins as per item 19 to 21. Double berth with foam mattress Drawers within berth Bedside units with drawers Bedside wall lights 24v Dressing table Stool for dressing table Settee Air conditioning LED overhead lighting (24v) Panoramic window sets with round opening portlights (with mosquito screens) Double 220v AC sockets Television (40") on bulkhead Blu-ray/CD/radio surround system with two speakers and sub-woofer Sonos audio system Sensor connected to fire detection system Fitted carpet Doors to en suite and lobby	19. Aft Starboard Twin Guest Cabin Twin berths with foam mattresses Under-berth stowage 2 x reading lights 24v Wardrobe Air conditioning LED overhead lighting (24v) Panoramic window sets with round opening portlights (with mosquito screens) Double 220v AC socket Sensor connected to fire detection system Television (32") Blu-ray/CD/radio surround system with two speakers and sub-woofer Sonos audio system Fitted carpet Doors to en suite and lobby
2. Flybridge Self-draining cockpit Acrylic deflecting spray screen Seating areas Storage lockers under seating Teak dining table (natural finish) with stainless steel pedestal Stainless steel aft safety rails Glass holders Wetbar unit Sink in wetbar unit Icemaker in wetbar unit Fridge in wetbar unit Ceramic electric griddle in wetbar unit Fire extinguisher in wetbar locker Deckwash outlet Low-level flybridge LED lighting (24v) Radar arch structure Radar chair with navigation light assembly Overhead LED lighting on underside of radar arch (24v) Four marine speakers controlled via Sonos Teak decking Ensign staff and socket	4. Deck Teak decking Fittings all in 316 stainless steel and chromed bronze Pair stainless steel bow mooring bollards and fairleads Stainless steel spring cleats Pair stern mooring bollards and fairleads Stainless steel pulpit and cockpit rails Stainless steel bow roller with anchor stop and devil's claw Single electric windlass 24v, starboard side, foredeck control only Anchor 100kg claw-type (galvanised) Anchor chain 100 metres (12mm diameter, galvanised) Stainless steel bow plate Deckwash with outlets forward and aft Chain locker Curved direct glazed safety glass windscreen Pantograph windscreen wipers and washers Fresh-water filler Fuel fillers port and starboard with display IMCO navigation lights Remote controlled spotlight at bow Low-level courtesy LED lights on side decks (24v) U-shaped bow seat Bow teak table (natural finish) on pedestal Large bow sunbed Glass holders	6. Bathing Platform Teak decked hydraulic lifting bathing platform (maximum lifting capacity 650kg/1433lb, maximum tender weight 550kg/1212lb) Stairs to aft cockpit with teak decking treads Stern spring cleats for stern-to-mooring purposes Foldout stainless steel swimming ladder Hot and cold hand-held swimming shower Fresh-water marina connection Ethernet network connection Large transom storage lockers Access to crew quarters Dockside AC connection 5m hydraulic telescopic passerelle	9. Galley American style fridge/freezer with ice maker 4-ring ceramic hob Hob extractor Convection oven Microwave oven Full size dishwasher Stainless steel sink Hot and cold water Rubbish bin Crockery set (10 place settings) Cutlery set (10 place settings) Side window with blind Storage consisting of cupboards and drawers LED overhead lighting (24v) LED lighting under top box lockers (24v) Double AC sockets Sensor connected to fire detection system Air conditioning Fire blanket Fire extinguisher First aid kit Manual side opening door to access port side deck Access to dining and saloon	11. Day Head Toilet Granite floor Washbasin Tap & accessories (toilet roll holder, soap dispenser, towel ring) Mirror Extractor fan LED overhead lighting (24v)	14. Master Stateroom En Suite Toilet Granite flooring Large twin washbasin Taps and accessories (toothbrush and glass holder, soap dispenser, towel rails and towels) Separate shower compartment Glass shower door Extractor fan Air conditioning outlet Mirror Storage cupboard LED overhead lighting (24v) Opening porthole with mosquito screen and Venetian blind Shaver socket 240/110v	Double 220v AC sockets Television (40") on bulkhead Blu-ray/CD/radio surround system with two speakers and sub-woofer Sonos audio system Sensor connected to fire detection system Fitted carpet Doors to en suite and walk-in wardrobe	20. Aft Starboard En Suite Toilet Granite flooring Washbasin Taps and accessories (toothbrush and glass holder, soap dispenser, towel rails and towels) Separate shower compartment Glass shower door Extractor fan Air conditioning outlet Vanity unit LED overhead lighting (24v) Opening porthole with mosquito screen Shaver socket 240/110v Door to guest cabin
3. Flybridge Helm Two helm seats Hydraulic steering Duplicate engine controls Analogue engine instrumentation Autopilot repeater Radar/chart plotter with GPS repeater Depth and speed multi display Cm8 monitoring system display Fuel display VHF second station Remote spotlight control Magnetic compass	5. Aft Cockpit Teak decking Self-draining Stairs to flybridge with teak treads Aft fixed U-shaped bench seating Teak table (natural finish) on stainless steel pedestal Stern safety gates Engine room access hatch 2 x stern capstan winches 24v and fairleads Overhead cockpit LED lights (24v) Low-level courtesy LED lights (24v)	8. Saloon and Dining Stainless steel framed sliding door to aft cockpit Sliding door curtains with tie back Sofa seating Coffee table Scatter cushions Television (55") on rise and fall Blue-ray/CD/radio surround sound system with five speakers and sub-woofer Sonos audio system Air conditioning Side windows with blinds Drinks cabinet with glassware stowage for eight (10 x Champagne, 10 x whisky, 1 x decanter) LED overhead lighting (24v) Double 220v AC sockets Sensor connected to fire detection system Telephone point 1 x table lamp Dining table 8 x freestanding dining chairs	10. Main Helm Console and Observation Area 1 x upholstered helm seats with electric operation Console with gloss black fascia panels Hydraulic power steering Leather bound steering wheel Radar/chart plotter with GPS Autopilot Depth and speed displays VHF radio first station Magnetic compass Horn control Switch panels Remote spotlight control Trim tab controls Digital engine instrumentation Cm8 monitoring system display	12. Main Deck Master Stateroom Panoramic side window Double berth with foam mattress Storage beneath berth Drawers within berth Bed side drawer units Bedside wall lights 24v Vanity/office desk with shelves Desk stool Settee with removable tray Air conditioning Television (55") on bulkhead Blu-ray/CD/radio surround system with two speakers and sub-woofer Sonos audio system LED overhead lighting (24v) Double AC socket Fitted carpet Sensor connected to fire detection system Stairs leading to dressing room and en suite	15. Lower Deck Lobby Stairs leading down from main deck saloon area LED overhead lighting 24v AC socket Fitted carpet Sensor connected to fire detection system Doors leading to lower deck guest accommodation	17. Midships VIP Walk-in Wardrobe Hanging rails Drawers Shelves LED overhead lighting (24v) AC socket Fitted carpet Door to stateroom	18. Midships VIP En Suite Toilet Granite flooring Large washbasin Taps and accessories (toothbrush and glass holder, soap dispenser, towel rails and towels) Separate shower compartment Glass shower door Extractor fan Air conditioning outlet Mirror LED overhead lighting (24v) Opening porthole with mosquito screen and Venetian blind Shaver socket 240/110v Door to stateroom

STANDARD
SPECIFICATIONS... CONTINUED

21. Aft Port Twin Guest Cabin Twin berths with foam mattresses (or double) Under-berth stowage 2 x reading lights 24v Wardrobe Air conditioning LED overhead lighting (24v) Organic panoramic window sets with round opening portlights (with mosquito screens) Double 220v AC socket Sensor connected to fire detection system Television (32") Blu-ray/CD/radio surround system with two speakers and sub-woofer Sonos audio system Fitted carpet Doors to en suite and lobby	Television 22" DVD/CD/radio with two speakers Cm8 monitoring system display Non-slip safety flooring Doors to crew cabins and crew toilet/shower Watertight door to engine room	27. Engine Compartment and Ancillaries Fuel filters/water separators to engines and generators Generator exhaust silencers and water separators Hot water tank – 200 litres 230v AC Engine exhaust dry risers with water injection Central hydraulic system providing hydraulic power for bow thruster, stern thruster (if specified), stabilisers (if specified). Chilled water air conditioning system (reverse cycle) AC Air intakes fitted with mist eliminator system & emergency shutdown flaps Air extraction fans 230v AC fitted with butterfly shutdown dampers Fresh water pressure set – 230v AC Fire hydrant system (single outlet) – 230v AC Bilge pumps – 24v DC (automatically operated) Engine driven hydraulic power pack – providing power steering Electo/hydraulic power pack – 24v DC controlling trim tabs, and bathing platform Fixed firefighting system – FM200 – automatic/manual operation with engines, generators and fans shutdown Fixed firefighting system – FM200 – manual operation Portable CO ₂ fire extinguisher Soundproofing throughout	1 x battery charger/inverter for 12v circuits 1 x battery charger for VHF 12v System 1 x inverter system 3 x 2kW immersion heaters for calorifier AC sockets throughout the boat Class approved fire detection system with sensors in all cabins and monitoring beside main helm position Ethernet data network with WiFi access throughout the boat	Fixed firefighting system – FM200 – manual operation Integral GRP fuel tank with two open vent lines and Cm8 monitoring system Fuel filters/water separators to engines and generators Central hydraulic system providing hydraulic power for bow thruster, stern thruster (if specified), stabilisers (if specified) Electo/hydraulic power pack – 24v DC controlling trim tabs, and bathing platform Engine driven hydraulic power pack – providing power steering
22. Aft Port Twin En Suite Toilet Granite flooring Washbasin Taps and accessories (toothbrush and glass holder, soap dispenser, towel rails and towels) Separate shower compartment Glass shower door Extractor fan Air conditioning outlet Vanity unit LED overhead lighting (24v) Opening porthole with mosquito screen Shaver socket 240/110v Door to guest cabin	24. Port Crew Cabin Twin fixed Pullman bunk berths with foam mattresses Reading lights 24v Air conditioning Wardrobe LED overhead lighting (24v) Double 220v AC socket Sensor connected to fire detection system CD/radio with two speakers Fitted carpet Opening porthole with mosquito screen and curtains Door to crew mess	28. Electrical System 3 x 20kW @ 50Hz slowspeed generators with underwater silent exhaust and sound shield Generator load sharing and synchronizing system 100A dockside AC connection Voltage regulating isolation transformer 63A second shore supply connection Semi-automatic AC power distribution 24v DC electrical system with full circuit-breaker protection 8 x starter batteries 24v circuit 2 x generator batteries 12v circuit 6 x domestic batteries 24v circuit Independent battery back-up for VHF radio Automatic battery charge distribution Remote battery switches controlled from aft cockpit locker 2 x battery charger/inverter for 24v circuits	29. Underwater Gear 5-blade nickel aluminium bronze propellers P-brackets – AB2 nickel aluminium bronze c/w water lubricated bearing Propeller shafts – Duplex F51 – high-grade stainless steel Self-aligning shaft seal with spare seal High performance rudders – Nibral Full cathodic bonding system to zinc anodes Hydraulic trim tabs – stainless steel Antifouling	
23. Aft Crew Mess Access door from stern Sink with tap Worktop with undercounter storage Air conditioning Microwave Undercounter fridge 220v AC sockets Washer/dryer AC Telephone point Sensor connected to fire detection system LED overhead lighting (24v) Seating area Table	25. Starboard Crew Cabin Twin fixed Pullman bunk berths with foam mattresses Reading lights 24v Air conditioning Wardrobe LED overhead lighting (24v) Double 220v AC socket Sensor connected to fire detection system CD/radio with two speakers Fitted carpet Opening porthole with mosquito screen and curtains Door to crew mess		30. Systems Electric toilet system with integral macerator 230v AC with two-switch control Toilets discharging to a 435 litre black water tank Black water tank discharging to a shore side facility or by a 24v DC macerating pump directly overboard Fresh water stowed in an integral 1750 litre fresh water tank with Cm8 monitoring system Water pressure system 230v AC Hot water tank – 200 litre 230v AC Hot water circulating pump 220v AC Grey water transfer units transfer grey water into the 1000 litre grey water tank Grey water tank discharging by a 24v DC pump directly overboard Chilled water air conditioning system (reverse cycle) AC Each area/cabin shall have room mounted variable speed AU HV air handling units Bilge pumps – 24v DC (automatically operated) Fixed firefighting system – FM200 – automatic/manual operation with engines, generators and fans shutdown	
	26. Crew Toilet & Shower Toilet Washbasin Shower cubicle Mirror Vanity unit LED overhead lighting (24v) Shaver socket 240/110v Door to crew mess			



AWARDS AND ACHIEVEMENTS

2015

ASIA BOATING AWARDS
Best Brand Presence

2014

WORLD YACHT TROPHIES
101 Sport Yacht – ‘Best Exterior Design’

ASIA BOATING AWARDS
Predator 80 – Best Worldwide Production Motoryacht 15M–24M

WORLD SUPERYACHT AWARDS
40 Metre Yacht ‘Sea Raider V’ – Finalist

2013

ASIA BOATING AWARDS
Best Brand Presence

MOTOR BOAT OF THE YEAR AWARD
28 Metre Yacht – ‘Best Custom Yacht’

2012

MOTORBOAT & YACHTING AWARDS
Manhattan 63 – ‘Best Flybridge above 55ft’

ROBB REPORT CHINA
‘Best of the Best’ 28 Metre Yacht

ASIA BOATING AWARDS
28 Metre Yacht – Best Production Motoryacht 24M–40M

WORLD SUPERYACHT AWARDS
Predator 130 ‘Never Say Never’ – Finalist

2011

ASIA BOAT AWARDS
Best Brand Presence in Asia

EUROPEAN CEO CORPORATE LIFESTYLE AWARDS
Best Luxury Brand

SHOWBOATS DESIGN AWARDS FLORIDA
Naval Architecture Motoryacht ‘Evil Zana’ Predator 130

2010

WORLD SUPERYACHT AWARDS
Predator 130 ‘Evil Zana’ – Finalist

QUINTESENTIALLY AWARDS
Yacht Charter of the Year

SYDNEY BOAT SHOW
Boating Industry Association of NSW – Best Marina Display

SYDNEY BOAT SHOW
Boating Industry Association of NSW – Best Overall Display

ASIA BOATING AWARDS
Predator 60 – Best Production Motoryacht 51 to 80 feet

2009

SYDNEY BOAT SHOW
Display of Excellence

CROATIA BOAT SHOW
Predator 92 Sport – Best in Class

CROATIA BOAT SHOW
30 Metre Yacht – Best in Class

CROATIA BOAT SHOW
Best Boat Show Stand

2008

UK MOTOR BOAT OF THE YEAR AWARDS
Manhattan 60

2007

EUROPEAN POWERBOAT OF THE YEAR
Superhawk 43

ASIA PACIFIC BOATING AWARDS
90 Yacht, Best of the Best

MODERN BOATING MAGAZINE
Portofino 47, Imported Powerboat of the Year

AUSTRALIAN MARINE INDUSTRIES FEDERATION AWARDS
Predator 62, Imported Powerboat of the Year

NOMINATED BY THE SUPERYACHT SOCIETY
37 Metre Yacht ‘The Snapper’

QUEEN’S AWARD FOR ENTERPRISE
International Trade

ROBERT BRAITHWAITE IS HONOURED WITH CBE
The Queen’s Birthday Honours List

2006

NOMINATED FOR THREE SUPERYACHT AWARDS
Predator 108 ‘SHIVER’

2005

AUSTRALIAN MARINE INDUSTRIES FEDERATION AWARDS
75 Yacht, Non-Trailable Boat Award

AUSTRALIAN MARINE INDUSTRIES FEDERATION AWARDS
Portofino 46, Commendation

MODERN BOATING, POWER BOAT OF THE YEAR AWARDS
Predator 68, Imported Powerboat of the Year

BOATS.COM MARINE INDUSTRY WEB AWARDS
Manufacturers Category for www.sunseeker.com

2004

SYDNEY BOAT SHOW
Best Overall Display

SYDNEY BOAT SHOW
Best Marina Display

2003

AUSTRALIAN MARINE AWARDS
Manhattan 56, Award for Excellence

AUSTRALIAN MARINE AWARDS
Predator 68, Best Imported Non-Trailable Yacht

2002

ENTREPRENEUR OF THE YEAR AWARD
Robert Braithwaite MBE

2001

BEST POWER DESIGN AWARD
105 Yacht, The Superyacht Society

BEST POWER INTERIOR AWARD
105 Yacht, The Superyacht Society

PRESIDENT’S AWARD
Southern California Marine Association

2000

QUEEN’S AWARD FOR ENTERPRISE
Continuous Innovation and Development

THE TIMES EXPORTER OF THE YEAR
Times Export Awards

ROBB REPORT AWARD
Best of the Best, Boating and Sailing

1999

ROBB REPORT AWARD
Best of the Best, Boating and Sailing

MOTORBOAT OF THE YEAR
Predator 75, BT British Nautical Awards

1998

SUPERYACHT DESIGN AWARD
Manhattan 74, Superyacht Design Awards

EDITOR IN CHIEF AWARDS
Yachts Magazine

1997

LIFETIME ACHIEVEMENT AWARD
Robert Braithwaite MBE, RYA Awards

1996

MOTORCRUISER OF THE YEAR AWARD
RYA British Nautical Awards

EXPORTER OF THE YEAR AWARD
DCCI Export Awards

1995

BOAT BUILDER OF THE YEAR AWARD
RYA/BMIF British Nautical Awards

1994

QUEEN’S AWARD FOR EXPORT ACHIEVEMENT
Queen’s Awards for Industry

1992

BEST IN THE WORLD AWARD
Renegade 60, Boating Magazine

ROBERT BRAITHWAITE IS HONOURED
WITH MBE

The Queen’s Birthday Honours List

1990

EXPORTER OF THE YEAR
SW International Business Awards

1989

QUEEN’S AWARD FOR EXPORT ACHIEVEMENT
Queen’s Awards for Industry

1987

QUEEN’S AWARD FOR EXPORT ACHIEVEMENT
Queen’s Awards for Industry

ACKNOWLEDGEMENTS

PHOTOGRAPHERS:

Tom Benson
Quin Bisset
Martin Brent
Jeff Brown
Andy Cahill
Gary Castle
Joe McCarthy
Ian Winstanley

CLOTHING & ACCESSORIES:

Roja Dove
Hansgrohe
Haviland
Heirlooms
Jo Malone
Tresor Paris
Porta Romana
SEABOB
Itsomi Sotogrande
Williams Jet Tenders
Zilli

