



NEW 525 SUV



AUSTRALIA'S MOST AWARDED LUXURY BOAT BUILDER

NEW 525 SUV



CROSS OVER TO THE ULTIMATE ADVENTURE YACHT

EDITION 15.6

TWO BOATS ... IN ONE

The sporty and adventurous Riviera 525 SUV is the latest new model to join our growing collection of luxury yachts opening up a whole new world of boating enjoyment for both the avid angler and the cruising entertainer.

Indeed, our owners tell us it's a lot like having two boats ... in one.

The SUV series is the perfect pairing of two legendary designs, each with its own formidable pedigree ... hence its name has automotive origins. Created after worldwide global input from owners the SUV, in many ways, is really your idea.

The result, of course, is a versatile vessel like no other – she combines the high-performance, blue-water cruising and fish-raising abilities of the classic Riviera Flybridge with the single-level, leisurely entertaining features of our very popular Sport Yacht design.

The SUV truly is ... the best of both worlds.

Key features – 525 SUV

- Sleek and stylish external design with contemporary hull windows and opening portholes
- Wide walk-around side decks with thoughtfully placed hand rails for added safety
- Large foredeck with optional sunpad
- Full-scale 9.90 square metre (106.6 ft²) no-nonsense cockpit, with large transom and mezzanine lounges, clever storage, BBQ and wet bar
- Large awning window and sliding glass door set in a strong stainless steel frame connects the modern aft galley with the cockpit
- Luxurious internal furnishings with the finest fabrics and leathers, as well as premium-brand appliances





- Spacious and sumptuous saloon, with 2 x Webasto sunroofs, opening side windows and massive front windows enhancing cross ventilation of fresh air and natural light
- Flexible three-stateroom, two-bathroom accommodation plan. The master stateroom, with ensuite, can be located forward or aft
- Feature bed headboards in every stateroom, complemented by subtle LED mood lighting
- Luxurious, sports-inspired helm with ultramodern technology, including glass bridge navigation features and C-Zone digital switching system as standard
- Joystick controls x 2, at the helm and in the cockpit
- Volvo Penta IPS2-800 (2 x 460kW / 626hp) propulsion system with twin D11 engines and drive units, with optional IPS2-950 system (2 x 533kW / 725hp)
- Clever lifestyle and storage concepts abound
- Thoughtful access panels to all key service points throughout the yacht
- Maintenance-free battery banks, Mastervolt battery chargers and inverter
- Fuel capacity 3500 litres (925 US gal), water capacity 750 litres (198 US gal)
- Watertight collision bulkhead forward
- Riviera's renowned, hallmark built-to-last philosophy
- Strong, robust hull with keel, backed by a 5-year structural warranty
- Exclusive membership of a global family of luxury motor yacht owners
- Riviera has, over the past 35 years, launched almost 5200 luxury yachts that today can be seen cruising the seas, oceans, lakes and rivers of the world.

THE BEST OF BOTH WORLDS

Befitting a yacht of this calibre, the 525 incorporates clever and convenient alfresco lifestyle concepts and ultramodern technology with luxurious appointments ... not to mention enhanced serviceability, convenient storage and an exacting eye for detail from fit to finish that reminds you that she is nothing less than an Australian-built Riviera.

And while she retains the distinct indoor/outdoor characteristics for which Riviera is internationally renowned, the 525 SUV is far more than a model refinement to suit the industry nomenclature that enhances Riviera's appeal on the world stage.

In fact, after speaking with members of our global family of owners, we've seized the opportunity to incorporate a wide range of standard inclusions that in the past may have been considered options.

You will sense these additional refinements from the moment you step onboard – double transom doors allow better access from both the port and starboard sides creating a walk-around transom lounge which, in effect, adds the large boarding platform to what is already a full, no-nonsense Flybridge-scale cockpit.

The swim platform, with lift-out stainless steel rails, also has a number of options to suit individual owner requirements, for example: custom rod holders and a bait preparation station can be fitted for the angler, as well as a 400kg hydraulic lift to assist with tender storage.

Owners have the option of a shorter lounge with transom storage bin for swimming and diving gear, or even a live bait tank with glass front, depending on requirements.

In the floor of the 9.90 square metre cockpit are separate hatches – with stainless steel lock-downs – providing direct maintenance access to either of the pod drives, as well as a large, central, self-draining moulded lazarette locker to store cockpit furniture and water equipment, and also deep fish bin to port and starboard.





Forward there is a comfortable three-seater cockpit lounge to port – upholstered in high-quality weather-proof vinyl – and there is an integrated table to provide a versatile alfresco entertaining area, and which can also be converted to a day-bed.

Behind the cockpit lounge is a double-plated refrigerated cool box and self-draining bin, as well as manual bilge pump access and lockable cabinet containing battery switches and AC/DC control board.

To starboard there's a lift-up lid with gas strut which reveals a double BBQ with stainless steel splashback and LED lighting, ice-maker, sink, solid surface bench top and even more storage – enough to impress even the most discerning chef.

The cockpit's innovative joystick docking control is also to starboard, although owners have the option of having it located on the port-side. This control is protected from the elements in its own enclosed fibreglass compartment.

The GRP hardtop of the 525 extends out and over the cockpit and owners can extend this further with an optional stainless steel and acrylic canvas awning for additional protection from the sun and extremities. There's also the option of a rear-mounted camera, should owners desire.



1. In the cockpit above the lounge and top loading fridge unit is the manual bilge pump handle and control and a separate lockable cabinet housing battery switches and the AC/DC control board. 2. The concealed cockpit joystick, control head and switches are hidden from view and the elements. 3. To starboard and sheltered under the cockpit overhang awning is a double barbecue unit with sink protected by a lid with stainless steel splash back. Beneath the is an ice maker. 4. The cockpit table and aft facing lounge are also sheltered under the cockpit overhang.



ALL THE COMFORTS OF HOME

The rear bulkhead of the 525 SUV is tinted, tempered glass in a highly polished and strong stainless steel frame, adding to the sense of light and space as you step into her spacious and luxurious saloon. To port is the modern and functional U-shaped galley from which the huge glass awning window opens out to the cockpit, in effect opening up the rear of the boat and, at the same time, affirming the galley as the central entertaining hub of the 525.

The galley has a contemporary two-pack finish to the overhead cupboards, complementing the satin-finish American oak timber cabinetry, which also comes with the options of high-gloss or satin cherry, satin teak or satin beach. Standard features include a two-burner electric cooktop with in-built pop-up fiddles to secure pots, a convection microwave oven and an optional drawer dishwasher within handy reach of the stainless steel sink. The solid surface bench top includes a sink-cover that doubles as a cutting board, while the mixer tap conveniently swivels so you can wash down the adjacent self-draining bin compartment.

In the headlining above the galley is a rod locker, confirming the 525's incredible versatility, and to starboard are two drawer fridges and a freezer, as well as a drinks cabinet (of course, with easy access from the cockpit) which has built-in drawers for glass and bottle storage.

RELAX IN STYLE

The 525 SUV's spacious saloon features a large L-shaped lounge to port with a hi-lo dining table which folds and lowers to become a coffee table. Adjacent to the dining area is a three-seater settee in which the middle seat base can slide out as an ottoman and form additional seating around the main dining table – also handy for family games nights. An additional table also lifts out from the settee and sits between the two remaining seats, forming additional dining or work space.

Forward of the three-seater settee is a 32-inch television and Fusion sound system, stored out of the way in its own dedicated compartment to starboard. It rises elegantly and electrically at the touch of a button, and swings for viewing from every saloon seating position.

Built into the solid GRP hardtop are two Webasto electric sunroofs – each with Oceanair block-out and flyscreens – which bring more light and fresh air into the saloon, enhancing that already achieved through the opening, tinted glass side windows and huge windscreen looking out over the forward deck and bow. This forward deck of the 525 can be accessed via wide walkways with high handrails on either side of the vessel, and there's an option of including a large sun pad to add to her versatile entertaining capabilities.





TAKE COMMAND

The stylish and sophisticated command centre of Riviera's 525 SUV is truly testament to superior design elements – complementing a huge array of ultramodern marine technology are two large and luxurious low-back leather helm seats, with sports flip-up cushions for bracing in rough seas.

Of course there's excellent visibility through the expansive windscreen that has air-conditioning outlets at its base to prevent fogging. The windscreen itself is made of curved, toughened glass in a fibreglass frame and also features two heavy-duty stainless steel windscreen wipers, as well as freshwater washers.

And there's absolutely "no compromise" in terms of spaciousness at the elevated wrap-around console, which itself has a distinct automotive feel. All critical navigation electronics, comprehensive engine instrumentation and vessel controls are within easy and ergonomic reach of the skipper's seat, including the helm's sports-inspired steering wheel, the remote control for the hardtop-mounted spotlight and the helm joystick control.

There's even room for two 17" navigation screens, and it's here that we are delighted to say that the full features of the innovative Volvo Penta Glass Cockpit navigation and CZone digital switching systems are standard inclusions with the Riviera 525 SUV.





WINDOW TO THE FUTURE

Volvo, through the revolutionary IPS pod propulsion, already offers the ease of joystick maneuverability, Dynamic Positioning System for station-holding while preparing lines and fenders or while waiting off a fuel jetty, as well Anti-Corrosion Protection and Auto-Pilot.

However, the 525 SUV's Glass Cockpit takes the overview and control of engines and navigation, including charts, sonar and radar (even auto-pilot), to extraordinary new heights ... and all in one place, and also includes auto-trim and full slow-speed steering, SportFish mode and Clear Wake.

Of course CZone extends the touch-screen monitoring and control to a suite of other onboard systems, including lighting, pumps, batteries, entertainment systems and appliances, even extending to wiper speed and wash functions.

OPULENT ACCOMMODATION

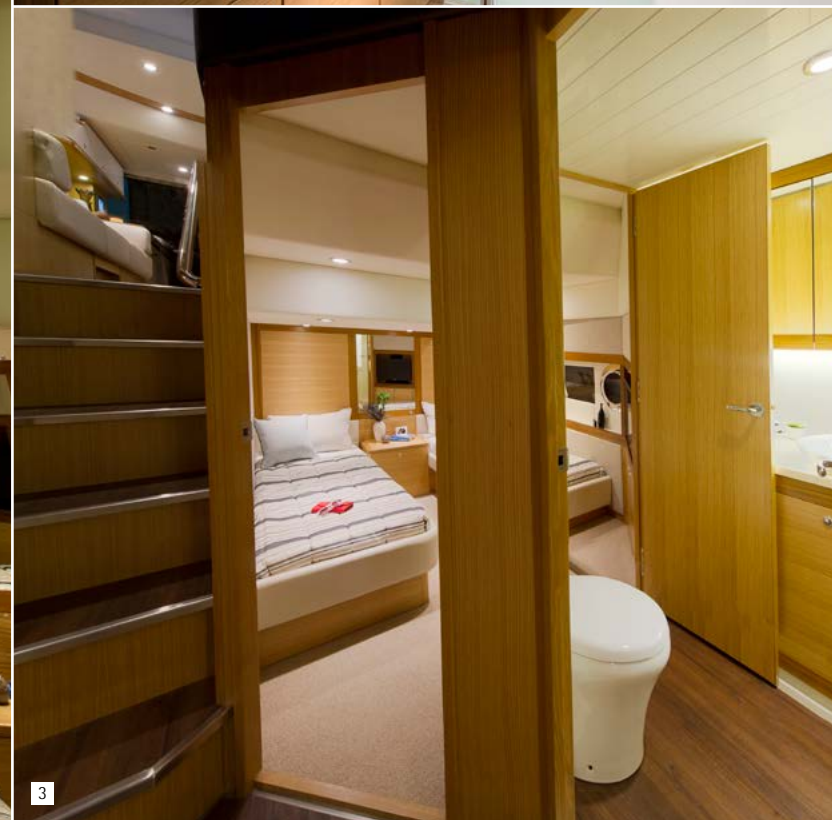
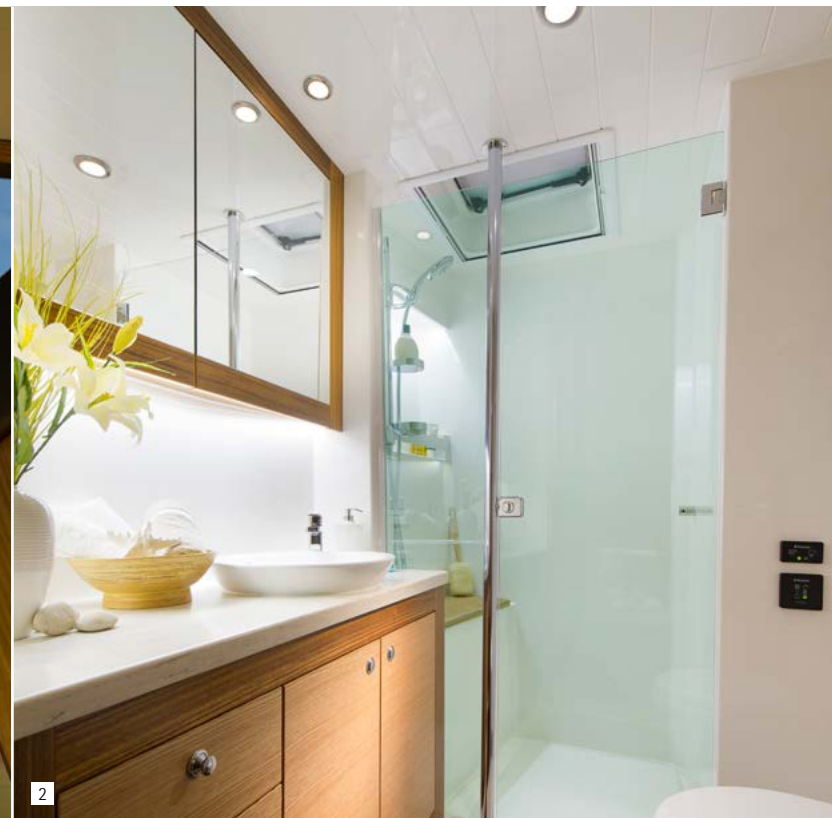
Riviera's steadfast commitment to going "first-class" in everything it does extends to the flexible three-stateroom/two-bathroom accommodation deck of the 525 SUV – again there's absolutely no compromise in terms of quality or on-board liveability and luxury.

Natural light filters into the wide accommodation atrium, courtesy of the massive windscreen and saloon sunroofs above and complemented by the accommodation deck's own clever design elements. You'll immediately garner a sense of spaciousness as you step down the non-slip, natural timber-finish companionway – the extent of headroom is clearly evident below deck.

The very generous master stateroom aft on the port-side features a contemporary palette of elegant fabric, soft-touch leatherette and satin oak with teak accents – another subtle reminder that you are aboard a world-class Riviera. Natural light is achieved through a large hull window and, although air-conditioned, there's an opening porthole to bring in extra fresh air, which is alarmed to CZone as a precaution.

The master's walk-around queen-sized bed is supremely comfortable and clever storage solutions include large under-bed drawers and a huge locker under the inner-spring mattress, in addition to the two bedside tables and cedar-lined hanging locker. From the comfort of the master bed, you can watch your favourite movie or television program courtesy of a 26-inch LCD TV and Samsung home theatre system.

1. The lower accommodation deck is awash with natural light from the open dash and windscreen atrium. 2. Aft master stateroom ensuite. 3. Optional layout of two twin beds in the aft port side cabin. 4. Aft master stateroom.





The master ensuite forward also features full headroom, luxurious bathroom fixtures, ample storage cupboards, overhead and vanity lighting, solid surface bench top as well as a contemporary porcelain sink and mixer tap. The large frameless shower-stall has a teak-lined seat and showerhead on a slide bar, while the bathroom floor is a high-quality, non-slip, timber-finish platform enabling excess water to drain quickly, ensuring that owners remain dry and comfortable. Maximum privacy is assured here – an overhead deck hatch brings in additional light and fresh air but, when required, an Oceanair block-out screen slides across.

Depending on specific owner requirements, the aft master stateroom can be configured as a guest stateroom featuring full-length, adult-sized twin beds, with the forward stateroom becoming the master.



1. The VIP guest stateroom forward and the day head bathroom. 2. Starboard aft cabin features twin full adult-size beds and is a very light and bright cabin. 3. Aft port side cabin can be arranged with the optional twin bed layout.



4

FIRST-CLASS ALL THE WAY

In keeping with its commitment to going first-class all the way, the air-conditioned VIP guest stateroom boasts all the luxuries of the master – indeed there's the option for it to actually be the master stateroom with its own private ensuite. This forward stateroom also has a comfortable queen-sized walk-around bed, cleverly placed overhead cabinets with positive locking hardware and gas support struts as well as large his/hers cedar-lined hanging lockers. Expansive hull windows and dual deck hatches maximise natural light and ventilation. Entertainment to this guest stateroom is via an optional 22-inch LCD TV and Samsung home theatre system.

Of course, the premium finish philosophy also applies to the ensuite, which mirrors the luxurious master bathroom, complete with overhead deck hatch and Oceanair block-out screen. In the standard layout, the guest ensuite starboard doubles as a day head.

There's an opening port hole and large hull window in the starboard aft twin cabin as well, enhancing the abundance of light and ventilation throughout the accommodation deck.

Consistent with the "nothing less than the best" philosophy at Riviera, there is full headroom and adult-sized twin beds, as well as cedar-lined hanging locker, drawers and under-bed storage. At the entrance to the cabin there's a large and convenient storage compartment which accommodates the optional laundry centre and 22-inch LCD TV and, again, Samsung home theatre entertainment system.



5



6

- 4. The very elegant forward VIP guest stateroom.
- 5. The optional laundry in the starboard aft cabin.
- 6. Riviera's attention to detail with both materials and craftsmanship can be seen in every detail throughout the yacht.



PERFECT PACKAGE

Standard power in the 525 SUV is the new-generation and fuel-efficient twin Volvo IPS2-800s (460kW/626hp x 2) pod drives featuring forward-facing, counter-rotating propellers.

Quiet operation is achieved through underwater exhausts, an effective silencer, state-of-the-art turbocharger and an air filter with improved insulation. At the same time, the robust engine design contributes to minimizing on-board vibrations.

In addition to superior handling maneuvering in tight quarters, IPS2 also offers excellent power-to-weight ratio, impressive fuel efficiency, long cruising range and high top-end speed. Sea trials with the twin IPS2 800s had the 525 SUV cruising at 24 knots with a top speed of 31 knots under full load (full fuel and water), and achieving a cruising range of 355NM at 24 knots.

The 525 model comes with the option of IPS2-950s (525kW / 725hp x 2).

DRY WHERE IT COUNTS

The “no compromise” approach is certainly evident in the flow-coated engine room, where the volume of space cannot be understated – access is gained through a hatch with gas strut located at the mezzanine step at the entrance to the saloon, thoughtfully opening forward to enhance passenger safety and, at the same time, maintaining walk-through access to the saloon from the cockpit when the hatch is open.

You’ll notice that, where possible, every wire, loom and plumbing line is coded, coloured, numbered and saddled neatly to ensure easy access for servicing. All fittings to the hull skin are double hose-clamped on or below the water line and the GRP 3500L fuel tank has both sight and electronic gauges. Additionally, each engine has Raycor fuel filters, with an option for dual filters. Emergency fuel shut-off valves can be accessed from outside the engine room for added safety.

Acoustic and thermal insulation linings are key features of the 525 SUV, as is the impressive commercial air intake system helping to keep the engine room temperature less than the maximum recommended by the engine manufacturer, and also reducing fuel consumption even further.

The air-conditioning units are mounted



high so gravity feeds condensation water out the side, while an advanced mist elimination system with veins draw additional moisture from the air and feeds directly overboard. All onboard drains including air-conditioning compressors feed into the common drain lines located on earth side of the yacht and drain aft, and four automatic bilge pumps with manual override are located at various points throughout the hull and pump directly overboard.



THE EASE OF JOYSTICKS

Having now launched hundreds of pod-driven luxury yachts, Riviera is at the forefront of a marine revolution offering impressive fuel economy, high performance, quiet operation, more internal space and, of course, joystick control.

The innovative joystick offers slow-speed maneuverability when backing up on a prize catch, in addition to precise docking. Indeed a skipper – either solo or with a novice crew – can simply push and twist the joystick to make the boat respond immediately, pivoting in place or crabbing sideways into a berth that’s just long enough to fit the vessel.

There’s also an additional joystick to starboard in the cockpit, the option of having it located on the port-side if owners desire.



CZONE CONVENIENCE

There are two CZone panels on board the Riviera 525 SUV – one in the galley and one at the helm – with the option of additional iPad connectivity.

CZone allows owners to operate multiple circuits at a touch, energising all lighting and electrics depending on your requirements. You no longer need to decide which circuit-breakers to turn on – simply select the mode which best suits the operation of the vessel and the appropriate circuits will be energised or disengaged.

It comes pre-programmed with three Modes – “entertaining”, “cruising” and “dock unattended” – and these modes can be customised by the owner so the system works exactly how you want.

There’s also a “service” mode that shuts down all power and systems. Other user-friendly features include interior light-dimming, timer controls, automated circuit control, wiper speed and wash functions.

CZone is based on industry-proven Controller Area Network (CAN) technology, and offers DC and AC switching and over-current protection.



Full systems monitoring (with alarms) including AC voltage, current, frequency and kilowatts, DC voltage, current and battery capacity remaining, along with tank levels and systems in operation indications, are clearly displayed on the CZone colour touch-control screens.

Additionally, ensuring you can fully tailor you’re your Riviera experience, there is a comprehensive range of optional and innovative factory-fitted electronic packages and custom fitments are also available through Riviera Electronics – everything from state-of-the-art fish-finders to cameras and underwater lighting.



ELECTRICAL EXCELLENCE

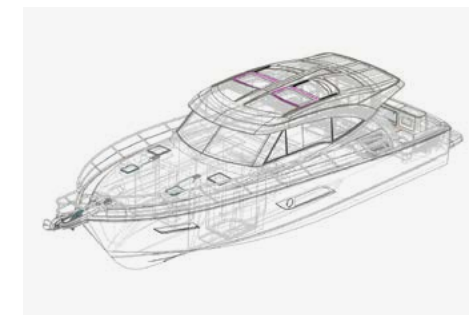
The 525’s maintenance-free batteries ensure carefree boating and are housed in special battery boxes in accordance with American Boating and Yacht Council standards. The boat also includes individual start battery banks for increased reliability with emergency parallel function. All battery banks are individually isolated at the main battery panel located in the cockpit, providing peace of mind in the unlikely event that one engine shuts down.

Watching television while at anchor or in the marina is now whisper-quiet through Mastervolt on-board DC-AC inverter for all installed televisions.

LED lights also provide trouble-free boating while reducing electrical current draw. The lamps use less than 10 per cent of the power required to run a bulb lamp – no bulbs mean no maintenance and long service life.

Also, Residual Current Device/Ground Fault Circuit Interrupter (RCD/GFCI) protection over the entire boat complies with international standards for safer boating.

And the 13.5kW Onan Marine Generator provides peace of mind and superior performance whilst at sea – it features state-of-the-art diagnostics and sound shields to minimise noise and deliver better sound quality.



IMPECCABLE PEDIGREE

The 525 SUV’s confident poise is just as evident offshore as it is at anchor – her solid and robust hull with keel is the evolution of Riviera’s rich 35-year heritage in building world-class luxury powerboats that are proven in the tough Australian blue-water conditions.

Our leading-edge technology and legendary build quality combines super-strong hand layups with solid GRP hull from the waterline down, structural core material in the hull flanks, main deck and hardtop, as well as precisely fitted, lightweight resin transfer-moulded small parts that are pre-fitted for a perfect seal when all major components are bonded together.

However, even before a single piece of timber was cut for the plug work, the 525 was created in-house using industry-leading Unigraphics 3D computer software, allowing Riviera’s team of talented and passionate international designers and engineers to put to purpose every inch of available space, with a firm focus on convenient access to every key maintenance point – any issues can be quickly identified and addressed, and service costs are kept to a minimum.

Of course, this thoughtful consideration for our Riviera family of owners is a key part of our ethos of doing all we can to help our valued owners achieve ... *‘the ultimate boating experience.’*



Optional storage bin, transom lounge and teak cockpit floor



Master Cabin aft (standard)



Master Cabin forwards (option)

CRAFTED WITH PASSION

The premium quality of our owner care at Riviera is directly commensurate with the quality of our built-to-last, world-class luxury motor yachts.

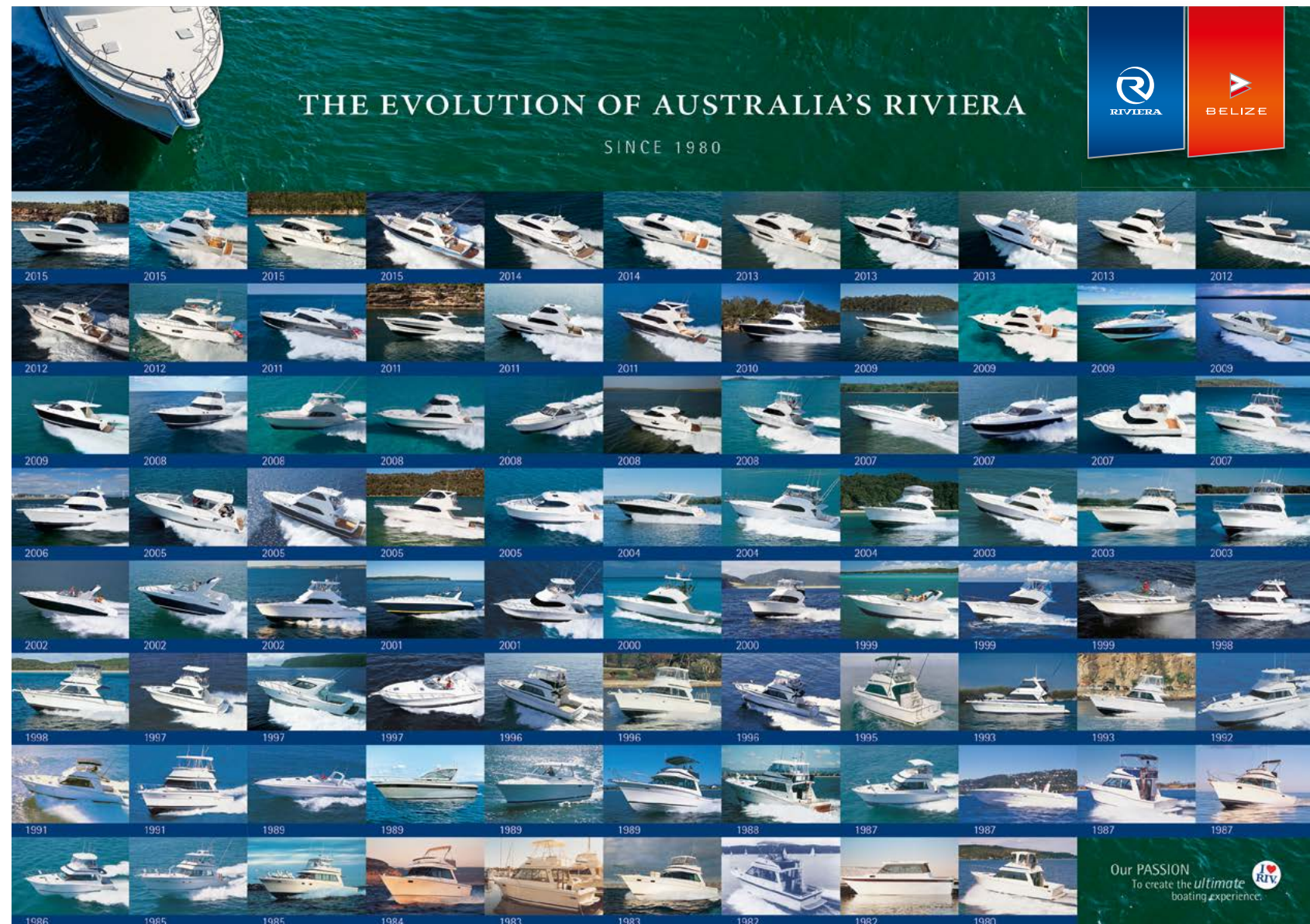
Your experience of dealing with Riviera – from the selection of options, electronics and décor all the way through to routine maintenance and repairs – will be undertaken with the utmost care.

Our highly skilled team at our world-class, 14-hectare manufacturing facility on Australia's Gold Coast consults with internationally acclaimed naval architects, designers and engineers. Consultation with our global family of yacht owners also plays an important part in our new model development program.

This ensures Riviera continues to exceed the constantly evolving desires of luxury motor yacht aficionados worldwide.

AWARDED FOR EXCELLENCE

Riviera's vast collection of local, national and international awards is testament to the pride and passion that goes into creating our premium range of luxury motor yachts. These awards span world-best practices in the spheres of education and training, employment, innovative manufacturing techniques, quality of workmanship and pioneering design.





The home of Riviera – our 14-hectare, state-of-the-art manufacturing facility on the Gold Coast of Queensland, Australia. This is the largest facility of its kind in the Southern Hemisphere. Each year in May, this world-class facility plays host to the educational and fun-filled Riviera Festival of Boating and the enormous Gold Coast International Marine Expo.

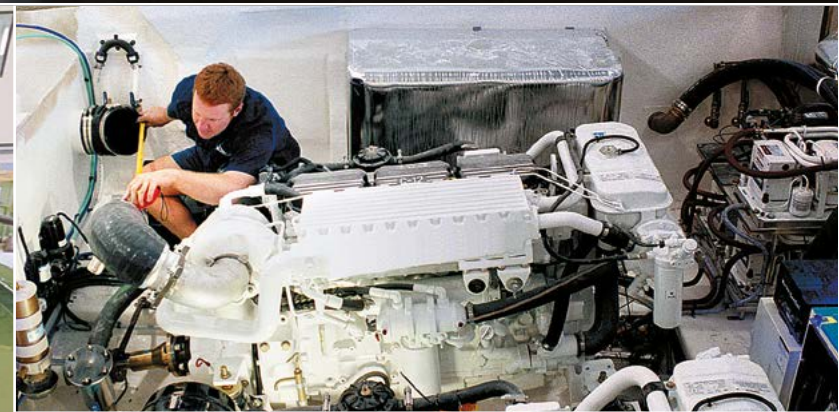
RIVIERA'S ETHOS INSPIRES CONFIDENCE

In the global luxury motor yacht market, the name Riviera stands synonymous on an international scale with hallmark luxury, technology, ease of operation, blue-water sea-keeping ability and unrivalled owner support.

This has not come about by chance – underpinning our remarkable success is an ethos of excellence reflected throughout our rich 35-year heritage and the launch of almost 5200 motor yachts that today can be seen cruising the oceans, seas, rivers and lakes of the world.

Our rigorous pursuit of the highest possible standards relates equally to the quality of materials, workmanship and technology that goes into building every new Riviera as it does to our commitment to our people and our ethical dealings, to our social and environmental sustainability, and to our renowned customer care.

This is a key part of what we like to call: 'the ultimate boating experience'.





The growing Riviera global network of dealers now spans 60 countries. Find a dealer near you at **RivieraAustralia.com**





Electronics play an ever-increasing role in the pleasure, performance and safety of luxury boats, and the choice of equipment that is available today is vast. In fact, selecting the equipment that meets your needs can be a very challenging task. R Electronics is here to help: we source the best systems and products from around the world; we are experts at matching technology to individual requirements and work closely with Riviera's design team and Riviera's global Dealer Network to create systems that maximise your pleasure and safety.

RElectronics.com.au



A passion for quality and good design steers everything we do at Riviera — and this is reflected in our exclusive range of clothing, accessories and decor items. If you love your Riviera, you'll feel at home with the Riviera Collection: casual yet stylish, comfortable, practical and made to withstand the rigours of boating life.

The Accessory and Decor Collection ranges from a storm jacket to stylish crockery. To make your luxury Riviera or Belize truly your own, we offer a wide choice of fabrics, finishes and color schemes that allow you to customise your yacht. Of course, we also have experienced designers who can advise and assist with your individual selection.

It is a real pleasure to own and use things that are aesthetically pleasing, work well and last – and because it is only appropriate that such qualities are found on board a Riviera, we supervise each individual interior scheme from creation to installation.

Riviera has the total leisure and style solution.

RivieraParts.com.au





THE RIVIERA EXPERIENCE

When you buy a Riviera or Belize, you really are joining a family.

Through our global network of dealers spanning some 60 countries and every continent of the world, owners of our world-class Riviera and Belize luxury yachts regularly receive exclusive invitations to our renowned educational workshops and seminars, as well as fun-filled social events to celebrate life with like-minded people.

This unrivalled owner support also extends to our special Experience events, where the sheer exhilaration of blue-water cruising can be enjoyed with the reassuring confidence of knowing experienced skippers and engineers are always close at hand.

Of course these are the passages that create very special memories that last a lifetime and, importantly, are often the catalyst for long-lasting friendships.

This is a key part of how we strive to help Riviera and Belize owners to enjoy all the rich and rewarding benefits that only boating can offer.





525 SUV

SPECIFICATIONS

Length Overall (inc. swim platform and bow sprit)	17.61 m	57' 9"
Lh to ISO8666 *	16.15 m	53'
Beam (inc. gunwale)	5.01 m	16' 5"
Maximum Draft (inc. props)	1.30 m	4' 3"
Dry Weight ** (approx.)	22,800 kg	50,300 lb
Fuel Capacity ***	3,500 L	925 US gal
Water Capacity	750 L	198 US gal
Holding Tank Capacity	400 L	106 US gal
Sleeping Capacity	6 persons	
Cockpit Area	8.5 m ²	91.5 ft ²
Mezzanine Deck	2.47 m ²	26.6 m ²
Total	10.97 m ²	118.1 m ²
Standard Engine		
Volvo Penta IPS800 x 2	460 kW	626 hp each
Engine Options		
Volvo Penta IPS950 x 2	533 kW	725 hp each

Riviera Clarification of Specification

*Length of the hull (Lh) to ISO8666: Includes all structural and integral parts (ie. the moulded length of the hull). It excludes parts that can be removed in a non-destructive manner without affecting the structural integrity of the craft, eg. pulpits, outdrives, driving platforms, rubbing strakes.

**Dry weight represents the estimated minimum weight of a boat with standard engines and options, no fuel or water on board, no equipment or provisions and no personnel. The stated dry weight may be exceeded.

***Denotes net tank capacity. For useable capacity do not rely on more than 90% of tank capacity. Actual capacity will vary according to boat trim and sea state.

Speeds are subject to normal weather conditions, fuel and/or water levels, passengers and equipment loads.

Refer to your Riviera Owner's Manual and your Dealer for height to hardtop and maximum height details.

The specifications in this document are not complete or definitive and are subject to change without notice and therefore may not be current. Riviera will not be liable (in contract, tort or otherwise) for any loss resulting from the inaccuracy of any information contained in this document.

Specifications may vary on a regional basis. Some images in this brochure may include non-standard or after-market options.

Warnings

Riviera is committed to building the best luxury cruisers, tailored to suit specific countries and their individual compliance laws and regulations. Riviera equipment and build specifications approved for one country may not be compliant with another country's safety and equipment regulations and as such those cruisers may have no recourse to Riviera extensive manufacturer's warranties.

Each country and State has different safety equipment standards.

It is important that you ensure the requirements in your jurisdiction are met prior to the vessel being used.

RIVIERA WARRANTY

LIMITED EXPRESS WARRANTY

Riviera Australia Pty Ltd. A.C.N. 139 663 906 (Riviera) makes this Limited Express Warranty (Warranty) to the original retail purchaser of a vessel manufactured by Riviera, provided the vessel is purchased from an authorized Riviera dealer and said first retail purchaser registers this Warranty with Riviera within 30 days of the purchase. This Warranty is the only warranty provided by Riviera, express or implied, with respect to any vessel manufactured by Riviera.

Five Year Limited Structural Warranty:

Riviera warrants to the first retail purchaser that for five (5) years after the date of delivery to the first retail purchaser, and for the period before it is delivered to the first retail purchaser, that the hull, deck, fly bridge and hardtop shall be free from structural defects due to material or workmanship, under normal non-commercial use, that result in any delamination or separation of the stringers or composite structure.

A structural defect includes the following:

- Structural failure of the fiberglass hull, deck, flybridge and hardtop;
- Structural failure of any parts glassed onto the above components; or
- Structural failure of the joints between any of the above components.

The structural warranty does not apply to the following:

- A water leak through the joints between the hull, deck, flybridge and hardtop;
- Fiberglass small parts failures;

- Parts that are not manufactured by Riviera;
- Interior failures, window or hatch failures;
- Damage resulting from misuse, abuse, negligence, improper docking, alteration, vandalism, accident or lack of performance of normal maintenance;
- Any charges incurred by any vessel returned to the factory, dealer or authorized agent for inspection prior to authorization of warranty repairs;
- The cost of removal or reinstatement of a part, or disassembly or reassembly of the unit of which it is a component;
- Heat and/or sun damage to the hull and/or gelcoat on hulls that are painted a dark color;
- Owners other than the first retail purchaser, or in relation to the Hull only, subsequent owners to whom the structural warranty of the Hull has been validly transferred in accordance with this Warranty;
- Any vessels sold to the first retail purchaser by anyone other than a Riviera dealer listed on <http://riviera.com.au> on the date of the purchase (Authorized Riviera Dealer); or
- Any item which Riviera has not been notified of within thirty (30) days of the issue becoming apparent.

The above list is not intended to be exhaustive and Riviera may, at its absolute discretion, elect to refuse any warranty claim whatsoever.

Vessels that go into a syndication or shared ownership program are entitled to the standard five year structural warranty, subject to fair wear and tear on the Vessel.

Transfer of Structural Warranty:

In reference to the structural warranty of the Hull ONLY, Riviera may agree in its sole and absolute discretion, to transfer the hull warranty to a subsequent owner of a vessel, who purchases the vessel from an Authorized Riviera Dealer, upon application and payment of a \$1000.00 Australian dollar transfer fee. Such transfer will only be effective upon confirmation in writing from Riviera. Where Riviera does approve the transfer of the remaining term of the hull warranty to a subsequent owner in writing, then such hull warranty will be transferred for a period of not more than a total period of five (5) years from the date an Authorized Riviera Dealer first delivered the vessel to the first retail purchaser.

One Year Limited Non-Structural Warranty

Riviera warrants that for one (1) year after the date of delivery to the first retail purchaser, and for the period before it is delivered to the first retail purchaser, all vessel components manufactured by Riviera shall be free from defects due to material or workmanship under normal non-commercial use. On components not manufactured by Riviera, Riviera shall assign to the first retail purchaser the warranties extended by those manufacturers as allowed.

The non-structural warranty does not apply to the following:

- Parts that are not manufactured by Riviera;
- Any charges incurred by any vessel returned to the factory, dealer or authorized agent for inspection prior to authorization of warranty repairs;

- The cost of removal or reinstatement of a part, or disassembly or reassembly of the unit of which it is a component;
- Heat and/or sun damage to the hull and/or gelcoat on hulls that are painted a dark color;
- The installation of any equipment by a dealer or other installer;
- Any installation of products not to Riviera's recommended specifications, because of the possibility that the use of these Products will exceed Riviera or government specification for overpowering, steering, handling, speed and safety;
- Owners other than the first retail purchaser;
- Any vessels sold to the first retail purchaser by anyone other than an Authorized Riviera Dealer;
- Any item which Riviera has not been notified of within thirty (30) days of the issue becoming apparent.

The non-structural warranty for vessels that go into a syndication or shared ownership program expires after the earlier of two-hundred and fifty (250) hours of use or six (6) months from the date of delivery to the syndication or shared ownership program, which ever occurs first.

RivieraAustralia.com

Our PASSION

To create the *ultimate*
boating experience.

