



NEW 52 ENCLOSED FLYBRIDGE



HAND CRAFTED BY AUSTRALIA'S MOST AWARDED LUXURY YACHT BUILDER

NEW 52 ENCLOSED FLYBRIDGE



THE EMBODIMENT OF EVOLUTION

EDITION 15.6

INTRODUCTION

When our highly talented team of designers and engineers first set out to create a completely new Riviera – one befitting membership of our exclusive Flybridge collection – they immediately turned to our loyal legion of blue-water cruising aficionados.

After all, who better to help steer Australia's most-awarded builder of luxury motor yachts into exciting new waters than highly experienced members of our global family of Riviera yacht owners?

Now, after this comprehensive consultation process, we present to you the supremely seaworthy, technologically advanced and absolutely luxurious Riviera 52 Enclosed Flybridge.

This new addition to our classic flybridge collection certainly does stand as testament to a growing worldwide affection for Riviera's hallmark passion for excellence – she more accurately reflects the international standards nomenclature, and enhances Riviera's competitiveness on the world stage.

And while she retains the distinct indoor/outdoor characteristics for which Riviera is internationally renowned, the new 52 Enclosed Flybridge is much more than mere model refinement – in fact we've seized the opportunity to incorporate a wide range of standard inclusions that, in the past, might have been considered optional upgrades.

Of course, this thoughtful consideration is a key part of our ethos of doing all we can to help our valued owners achieve ... 'the ultimate boating experience'.





KEY FEATURES

- Sleek and stylish external design with contemporary hull windows and opening portholes
- Wide walk-around side decks with thoughtfully placed hand rails for added safety
- Large foredeck with optional sunpad or davit for tender
- Full-scale 9.90 square metre (106.6 ft²) no-nonsense cockpit, with large transom and mezzanine lounges, clever storage, BBQ and wet bar
- Large awning window and sliding glass door set in a strong stainless steel frame connects the modern aft galley with the cockpit
- Luxurious internal furnishings with the finest fabrics and leathers, as well as premium-brand appliances
- Spacious and sumptuous saloon, with opening side windows and massive front windows enhancing cross ventilation of fresh air and natural light
- Flexible three-stateroom, two-bathroom accommodation plan. The master stateroom, with ensuite, can be located forward or aft
- Feature bed headboards in every stateroom, complemented by subtle LED mood lighting
- Luxurious, ultramodern flybridge enclosed on three sides – with L-shaped lounge and dining table aft and to port, wet bar, refrigeration and premium entertainment system – a virtual saloon in the sky. The rear is enclosed by strata glass from the hardtop to the deck and there's an option for a fully electric sliding sunroof





- Sporty helm with ultramodern technology and fully adjustable helm and companion chair as well as forward lounge, with glass bridge navigation features and C-Zone digital switching system as standard
- Joystick controls x 2, with optional flybridge aft tournament station
- IPS2-950 propulsion system, twin 533kw/725hp D11 engines and drive units as standard propulsion
- Clever storage concepts abound
- Thoughtful access panels to all key service points throughout the yacht
- Maintenance-free battery banks, Mastervolt battery chargers and inverter
- Fuel capacity 3500 litres (925 US gal), water capacity 750 litres (198 US gal)
- Watertight collision bulkhead forward
- Riviera's renowned, hallmark built to last philosophy
- Strong, robust hull with keel, backed by a 5-year structural warranty
- Exclusive membership of a global family luxury motor yacht owners
- Riviera has, over the past 35 years, launched almost 5200 luxury yachts that today cruise the seas, oceans, lakes and rivers of the world.

THE BEST OF BOTH WORLDS

Befitting a pleasure boat of this calibre, the Riviera 52 Enclosed Flybridge incorporates clever and convenient alfresco lifestyle concepts and ultramodern technology with luxurious appointments ... not to mention enhanced serviceability, savvy storage and an exacting eye for detail from fit to finish that reminds you that she is nothing less than an Australian-built Riviera.

You will sense our hallmark passion for excellence from the moment you step onboard – double transom doors allow better access from both the port and starboard sides in effect adding the large swim platform to what is already a full-scale, no-nonsense cockpit and creating a walk-around transom lounge with additional storage bin for swimming and diving gear.

The swim platform, with lift-out stainless steel rails, also has a number of options to suit individual owner requirements, for example: custom rod holders and a bait preparation station can be fitted for the angler, as well as a 400kg hydraulic lift to assist with tender storage.

Owners have the option of a longer transom lounge, or even a live bait tank with glass front, depending on requirements.

In the deck of the 9.90 square metre (106'6") cockpit are separate hatches – with stainless steel lock-downs – providing direct maintenance access to either of the pod drives, as well as a large, central, self-draining moulded lazarette locker to store cockpit furniture and water toys, and also deep fish bins to port and starboard.

Forward there is a comfortable three-seater cockpit mezzanine lounge to port – upholstered in high-quality weather-proof vinyl – and there is an optional integrated and interchangeable table to provide a versatile alfresco entertaining area, and which can also be converted to a day-bed.

Behind the cockpit lounge is a double-plated refrigerated cool box and self-draining





recycling bin, as well as manual bilge pump access and lockable cabinet containing battery switches and AC/DC control board.

To starboard there's lift-up lid with gas strut which reveals a double BBQ with stainless steel splashback and LED lighting, ice-maker, sink, solid surface bench top and even more storage – enough to impress even the most discerning chef.

The cockpit's innovative joystick docking control is also to starboard, although owners have the option of having it located on the port-side. This control is protected from the elements in its own enclosed fibreglass compartment.

Stretching out and over the cockpit is the flybridge deck, which can be extended even further with a stainless steel and acrylic canvas awning for shaded protection from the sun and extremities. There's also the option of a rear-mounted camera, should owners desire.

THE EASE OF JOYSTICKS

Having now launched hundreds of pod-driven luxury pleasure yachts, Riviera is at the forefront of a marine revolution offering impressive fuel economy, high performance, quiet operation, more internal space and, of course, joystick control.

The innovative joystick offers slow-speed maneuverability when backing up on a prize catch, in addition to precise docking. Indeed a skipper – either solo or with a novice crew – can simply push and twist the joystick to make the boat respond immediately, pivoting in place or crabbing sideways into a berth that's just long enough to fit the vessel. There's also an additional joystick to starboard in the cockpit with the option of having it located on the port-side if owners desire.

The 52 Enclosed Flybridge has joysticks at the helm and in the cockpit. There is an option for a tournament station to starboard and aft on the flybridge which also includes a joystick, steering wheel, throttles and, if so you desire, an optional 15" multi-function display.

STEP UP TO THE SKY LOUNGE

Ascending to the modern flybridge via a stylish floating internal staircase with teak treads, you start to gain a full appreciation of the thought and consideration behind this new-generation Riviera 52.

The flybridge enclosed on three sides is ultra-modern, spacious and sumptuous, with the rear enclosed by strata glass from the hardtop to the deck with side and rear zip opening panels.

The flybridge helm features and inspired dash design, two fully adjustable helm seats, forward lounge with storage underneath and large L-shaped lounge to port, which also has a lift-up base for even more storage.

The bright and breezy atmosphere here in this virtual sky lounge is achieved through the large, opening side windows and massive windscreen – all of which come with covers. There's a lockable hatch above the internal staircase and stainless steel ladder to the hardtop – and there's even an option for an electric sliding sunroof with integrated blind to open up the flybridge even further, should you desire.

Thoughtfully placed overhead grab rails and a padded, upholstered headlining are a nice touch too, as is the wet bar including solid surface bench top, refrigerator, drink holders, sink with hot and cold water ... all serving to keep you refreshed while underway. The internal staircase is nice and close to the galley which can easily feed prepared delicacies up to the gathering – simply send your request via intercom.

And if you desire your own personal soundtrack to the panoramic view, the Riviera 52's flybridge also sports an AM/FM stereo, CD/DVD player with iPod interface and four speakers, with the option of including an integrated 26" LED TV.

1 and 2. Above the internal staircase to the flybridge is a watertight, lockable hatch that can be closed for safety offshore or locked when in the marina or at anchor to secure the saloon.





WINDOW TO THE FUTURE

Volvo, through the revolutionary IPS pod propulsion, already offers the ease of joystick maneuverability, Dynamic Positioning System for station-holding while preparing lines and fenders or while waiting off a fuel jetty, as well Anti-Corrosion Protection and Auto-Pilot.

The 52's Glass Cockpit takes the overview and control of engines and navigation, including charts, sonar and radar (even auto-pilot), to extraordinary new heights ... and all in one place, and also includes auto-trim and full slow-speed steering, SportFish mode and Clear Wake.

PLEASE, TAKE YOUR SEAT

The stylish and sophisticated command centre of the 52 Enclosed Flybridge is truly testament to its superior design and Riviera's passion to both source and embrace the latest in marine technology.

With twin helm seats and a forward lounge, there's absolutely "no compromise" in terms of comfort at the command console, which itself has a distinct automotive inspired feel.

Of course there's excellent visibility through the expansive windscreen that has freshwater outlets at its base and heavy-duty pantographic windscreen wipers with intermittent controls.

All critical navigation electronics, comprehensive engine instrumentation and vessel controls are within easy and ergonomic reach of the skipper's seat, including the helm's sporty steering wheel, the 3.5-inch CZone digital switching panel, the remote control for the hardtop-mounted spotlight and the helm joystick control.

There's even room for up to three 17" navigations screens, and it's here that we are delighted to say that the full features of the innovative Volvo Penta Glass Cockpit navigation and CZone digital switching systems are standard inclusions with the Riviera 52 Enclosed Flybridge.



ALL THE COMFORTS OF HOME

The rear saloon bulkhead of the 52 Enclosed Flybridge is tinted, tempered glass set in a strong, highly polished stainless steel frame, adding to the sense of light and space as you step into her luxurious saloon. To port is the modern and functional U-shaped galley from which the huge glass awning window opens out and over to the cockpit, in effect opening up the rear of the boat and, at the same time, affirming the galley as the central entertaining hub of the 52.

The galley has the option of a contemporary two-pack finish to the overhead cupboards, complementing the satin-finish American oak timber cabinetry, which also comes with the options of high-gloss or satin cherry, satin teak or satin beach. Standard features include a two-burner electric cook-top with in-built pop-up fiddles to secure pots, a convection microwave oven and an optional drawer dishwasher within handy reach of the stainless steel sink. The solid surface bench top includes sink-cover that doubles as a cutting board, while the mixer tap conveniently swivels so you can wash down the self-draining bin compartment to port.

In the headlining above the galley is a rod locker, confirming the 52's incredible pragmatism, and to starboard are two drawer fridges and a freezer, as well as a drinks cabinet (of course, with easy access from the cockpit) which has built-in drawers for glass and bottle storage.

1. The rear galley on the port side boasts ample bench space and thanks to the ingenious awning window, creates a seamless link between the saloon, galley and cockpit. It helps bring the great outdoors in, so every guest onboard feels included in the party regardless of their location. With this extremely sociable design, there can be guests seated in the saloon area perhaps watching TV on the dash concealed raising screen, the galley gathering – preparing the next nautical feast whilst a further group of guests maybe outside keeping the BBQ master-chef company. All three groups are visually and physically connected through these three spaces.





RELAX IN STYLE

The 52 Enclosed's spacious saloon features a large L-shaped lounge to port with a hi-lo dining table which folds and lowers to become a coffee table. Adjacent to the dining area is an optional three-seater settee in which the middle seat base can slide out as an ottoman and form additional seating around the main dining table – also handy for family games nights or friendly raft-ups. An additional table also lifts out from the settee and sits between the two remaining seats, forming additional dining or work space.

Forward of the three-seater settee is a 40-inch television and high-end sound system, stored out of the way in its own dedicated compartment to starboard. It rises elegantly and electrically at the touch of a button, and swings for viewing from every saloon seating position.

Opening, tinted side windows and the huge windscreen looking out over the forward deck and bow bring in more light and fresh air. The foredeck of the 52 Enclosed Flybridge can be accessed via wide side decks with high handrails on either side of the yacht. The options for the foredeck include of a large sun pad to add to her versatile entertaining capabilities, or single-boom davit with a 350kg (771lbs) rating.

Again, another way you can personalise your Riviera.

2. Abundant storage, soft-close drawer runners, stainless steel appliances, ample drawer refrigeration, practical splash backs and a generous footprint make this galley a real centrepiece. 3. Opposite the galley is additional refrigeration and freezer space, bar storage and the nerve centre of the 52, the C-Zone digital switching panel. From here all of the vessels systems can be controlled and programmed at the touch of a finger. 4. The conversation hub of the 52 is the C-shaped lounge and dining area to port and the settee opposite. From the seated position here, you have clear sight lines for 360 degrees.

OPULENT ACCOMMODATION

Riviera's steadfast commitment to going "first-class" in everything it does extends to the flexible three-stateroom/two-bathroom accommodation deck of the 52 Enclosed Flybridge – again there's absolutely no compromise in terms of quality or on-board liveability and luxury.

Natural light filters into the wide accommodation atrium, courtesy of the massive saloon front and side windows above and is complemented by the accommodation deck's own clever design elements. You'll immediately garner a sense of spaciousness as you step down the non-slip, natural timber-finish companionway – the extent of headroom is clearly evident below deck.

The very generous master stateroom aft on the port-side features a contemporary palette of elegant fabric, soft-touch leatherette and satin oak with teak accents – another subtle reminder that you are aboard a world-class Riviera. Natural light is achieved through a large hull window and, although air-conditioned, there's an opening porthole to bring in extra fresh air in both the port and starboard staterooms.



1. The forward saloon is a very social hub. 2. The dining table lowers and folds to a coffee table. 3. Forward in the saloon to starboard is the concealed entertainment centre providing storage for remote controls, DVD, CD's or an iPod. 4 and 5. The starboard settee is an ingenious piece of design with its optional pop-up table. Perfect for additional dining or functional as a work space.



The master's walk-around queen-sized bed is supremely comfortable and savvy storage solutions include large under-bed drawers and a huge locker under the inner-spring mattress, in addition to the two bedside tables and cedar-lined hanging locker. From the comfort of the master bed, you can watch your favourite movie or television program courtesy of a 26-inch LCD TV and home theatre system.

The master ensuite forward also features generous headroom, luxurious bathroom fixtures, ample storage cupboards, overhead and vanity lighting, solid surface bench top as well as a contemporary porcelain sink and mixer tap. The large frameless shower-stall has a teak-lined seat and showerhead on a slide bar, while the bathroom floor is a high-quality, non-slip, timber-finish platform enabling excess water to drain quickly, ensuring that owners remain dry and comfortable. Maximum privacy is assured here – an overhead deck hatch brings in additional light and fresh air but, when it's needed, an Oceanair block-out screen slides across.

Depending on the owners choice, the aft master stateroom can be configured as a guest stateroom featuring full-length, adults-sized twin beds, with the forward stateroom becoming the master.



6. The aft port stateroom can either be the master or VIP guest. Both the the starboard and port aft cabins feature generous size hull windows and opening port hole bringing abundant light and fresh air below.
 7. Clever storage abounds in the port aft stateroom both behind and beneath the bed. 8. Detailed joinery featuring teak and American oak give a very contemporary finish.
 9. The port side bathroom. Generous bench top space, storage and shower stall size are key design features.

First-class all the way

In keeping with its commitment to going first-class, the air-conditioned VIP guest stateroom boasts all the luxuries of the master – indeed there's the option for it to actually be the master stateroom with its own private ensuite. This forward stateroom also has a comfortable queen-sized walk-around bed, cleverly placed overhead cabinets with positive locking hardware and gas support struts as well as large his and hers cedar-lined hanging lockers. Expansive hull windows and dual deck hatches maximise natural light to the VIP guest. Entertainment to this guest stateroom is via an optional 22-inch LCD TV and home theatre system.

Of course, the premium finish philosophy equally applies to the ensuite, which mirrors the luxurious master bathroom, complete with overhead deck hatch and Oceanair block-out screen. In the standard layout, the starboard guest ensuite doubles as the day head.

There's an opening port hole and large hull window in the starboard aft twin stateroom as well, bringing further light and ventilation to the accommodation deck.

Consistent with the "nothing less than the best" philosophy at Riviera, there is full headroom and adult-sized twin beds, as well as cedar-lined hanging locker, drawers and under-bed storage. At the entrance to the starboard aft stateroom there's a large and convenient storage compartment which accommodates the laundry centre and optional 22-inch LCD TV and, again, premium brand home theatre entertainment system.

1. The starboard side stateroom features twin adult size beds. 2. The starboard guest stateroom also features space for a concealed washer/dryer unit. 3. The forward VIP guest stateroom has ensuite access to the day head. 4. The forward stateroom can be selected as either the master or VIP guest. Optional hull windows can be added to bring into view the water infused landscape.





THE POWER IS YOURS

This neatly brings us to what may well be the really heroic aspect of this boat - the engineering department that makes all this performance and generosity possible.

The Riviera 52 Enclosed Flybridge comes standard with the proven and popular twin IPS2-950 pod configuration with D11 engines, each delivering 725hp.

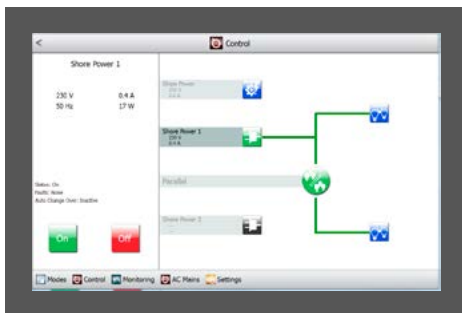
Quiet operation is achieved through under-water exhausts, an effective silencer, state-of-the-art turbocharger and an air filter with improved insulation.

At the same time, the robust engine design and mountings contribute to minimising on-board vibration. And in addition to superior handling maneuvering in tight quarters, IPS2 also offers excellent power-to-weight ratio, impressive fuel efficiency, long cruising range and high top-end speed.

The renowned Volvo Penta IPS system puts twin forward-facing counter-rotating props to the fore. Volvo includes traditional lever controls as well as the intuitive joystick that can single-handedly get you in and out of the tightest of marina berths.



1. The engine room as full headroom forward with all of the key electrical controls and circuits located at eye level. 2. The CZone digital switching master control panel is located in the saloon. From here you have one touch, full and instant control over of all onboard AC and DC systems and equipment. CZone meets global marine industry standards and utilises an NMEA 2000 protocol. CZone is a proven and reliable system that has electro-mechanical back-up fusing, system intelligence in all modules and easy replacement of modules. There is a manual override function for redundancy. 3. With CZone you have the option to add an additional iPad to operate as a remote control for all your onboard systems.



STEP INTO THE FUTURE

Enter CZone: which extends the touch-screen monitoring and control to a suite of other onboard systems, including lighting, pumps, batteries, entertainment systems and appliances.

There are two CZone panels on board the Riviera 52 Enclosed Flybridge – one in the galley and one at the helm – with the option of additional iPad connectivity.

C-Zone allows owners to operate multiple circuits at a touch, energising all lighting and electrics depending on your requirements. It comes pre-programmed with three Modes – “entertaining”, “cruising” and “dock unattended” – and these modes can be customised by the owner so the system works exactly how you want.

There’s also a “service” mode that shuts down all power and systems. Other user-friendly features include interior light-dimming, timer controls, automated circuit control, wiper speed and wash functions.

Additionally, ensuring you can fully tailor you’re your Riviera experience, there is a comprehensive range of optional and innovative factory-fitted electronic packages and custom fitments are also available through Riviera Electronics – everything from state-of-the-art fish-finders to cameras and underwater lighting.



DRY WHERE IT COUNTS

The “no compromise” approach is certainly evident in the flow-coated engine room, where the volume of space cannot be understated – access is gained through a hatch with gas strut located on the mezzanine step at the entrance to the saloon, thoughtfully opening forward to enhance passenger safety and, at the same time, maintaining walk-through access to the saloon from the cockpit when the hatch is open.

You’ll notice that, where possible, every wire, loom and plumbing line is coded, coloured, numbered and saddled neatly to ensure easy access for servicing. All fittings to the hull skin are double hose-clamped on or below the water line and the GRP 3500L fuel tank has both sight and electronic gauges. Additionally, each engine has Raycor fuel filters, with an option for dual filters. Emergency fuel shut-off valves can be accessed from outside the engine room for added safety.

Acoustic and thermal insulation linings are key features of the 52 Enclosed Flybridge, as is the impressive commercial air intake system helping to keep the engine room temperature at 10 degrees less than the maximum recommended by the engine manufacturer, and also reducing fuel consumption even further.

The air-conditioning units are mounted high so gravity feeds condensation water out the side, while a mist elimination system with veins draw additional moisture from the air. Four automatic bilge pumps with manual override are located at various points throughout the hull and pump directly over board, as opposed to the common drain lines located on either side of the boat that drain aft.



ELECTRICAL EXCELLENCE

The 52 Enclosed Flybridge’s maintenance-free batteries ensure carefree boating and are housed in special battery boxes in accordance with American Boating and Yacht Council standards. The yacht also includes individual start battery banks for increased reliability with emergency parallel function. All battery banks are individually isolated at the main battery panel located in the cockpit, providing peace of mind in the unlikely event that one engine shuts down.

Watching television while at anchor or in the marina is now whisper-quiet through Mastervolt on-board DC-AC inverter for all installed televisions.

LED lights also provide trouble-free boating while reducing electrical current draw. The lamps use less than 10 per cent of the power required to run a bulb lamp – no bulbs mean no maintenance and long service life.

Also, Residual Current Device/Ground Fault Circuit Interrupter (RCD/GFCI) protection over the entire boat complies with international standards fore safer boating.

And the 13.5kW Onan Marine Generator provides peace of mind and superior performance and features state-of-the-art diagnostics and sound shields to minimise noise.



IMPECCABLE PEDIGREE

The 52 Enclosed Flybridge’s confident poise is just as evident offshore as it is at anchor – her solid and robust hull with keel is the evolution of Riviera’s rich 35-year heritage in building world-class luxury motor yachts that are proven in the tough Australian blue-water conditions.

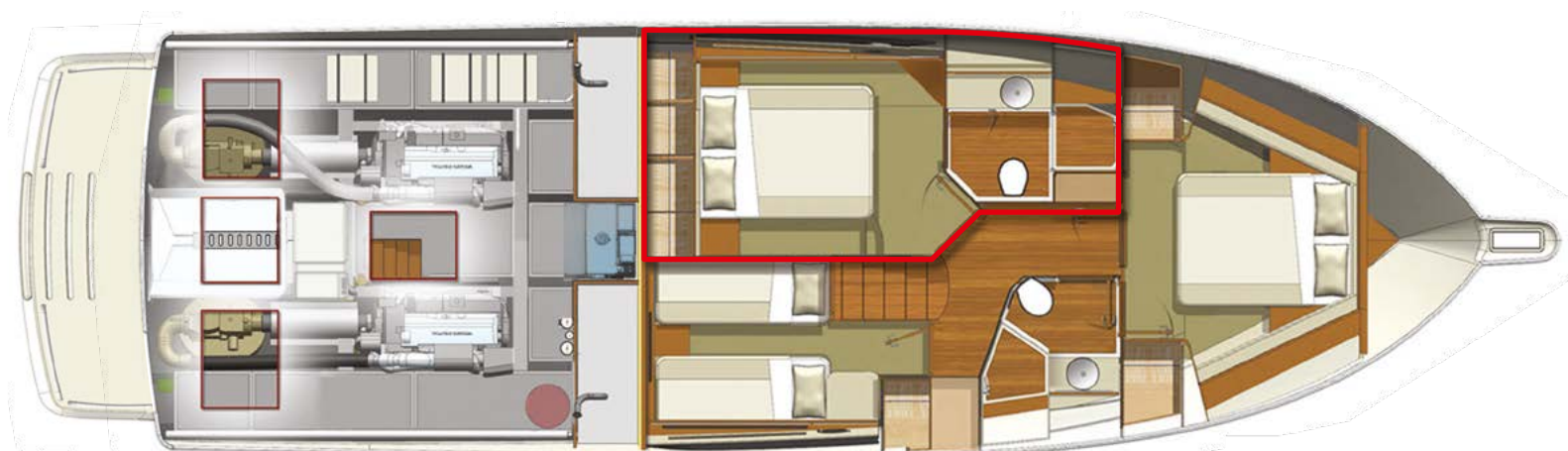
Our leading-edge technology and legendary build quality combines super-strong hand layups with solid GRP hull from the waterline down, structural core material in the hull flanks, main deck and hardtop, as well as precisely fitted, lightweight resin transfer-moulded small parts that are pre-fitted for a perfect seal when all major components are bonded together.

However, even before a single piece of timber was cut for the plug work, the 52 Enclosed Flybridge was created in-house using industry-leading Unigraphics 3D computer software, allowing Riviera’s team of talented and passionate designers and engineers to put to purpose every inch of available space, with a firm focus on convenient access to every key maintenance point – any issues can be quickly identified and addressed, and service costs are kept to a minimum.

Of course, this thoughtful consideration for our Riviera family of owners is a key part of our ethos of doing all we can to help our valued owners achieve ... ‘the ultimate boating experience’.



Optional storage bin, transom lounge and teak cockpit floor



Optional Seakeeper gyro forward engine room

Master Cabin aft (standard)



Master Cabin forwards (option)

CRAFTED WITH PASSION

The premium quality of our owner care at Riviera is directly commensurate with the quality of our built-to-last, world-class luxury motor yachts.

Your experience of dealing with Riviera – from the selection of options, electronics and décor all the way through to routine maintenance and repairs – will be undertaken with the utmost care.

Our highly skilled team at our world-class, 14-hectare manufacturing facility on Australia's Gold Coast consults with internationally acclaimed naval architects, designers and engineers. Consultation with our global family of yacht owners also plays an important part in our new model development program.

This ensures Riviera continues to exceed the constantly evolving desires of luxury motor yacht aficionados worldwide.

AWARDED FOR EXCELLENCE

Riviera's vast collection of local, national and international awards is testament to the pride and passion that goes into creating our premium range of luxury motor yachts. These awards span world-best practices in the spheres of education and training, employment, innovative manufacturing techniques, quality of workmanship and pioneering design.





The home of Riviera – our 14-hectare, state-of-the-art manufacturing facility on the Gold Coast of Queensland, Australia. This is the largest facility of its kind in the Southern Hemisphere. Each year in May, this world-class facility plays host to the educational and fun-filled Riviera Festival of Boating and the enormous Gold Coast International Marine Expo.

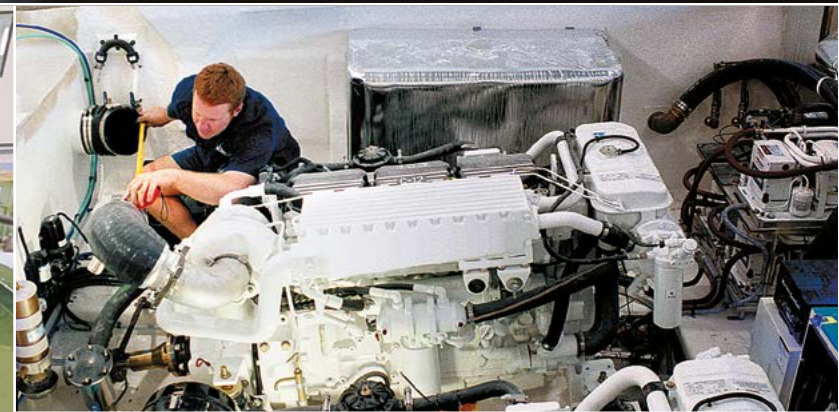
RIVIERA'S ETHOS INSPIRES CONFIDENCE

In the global luxury motor yacht market, the name Riviera stands synonymous on an international scale with hallmark luxury, technology, ease of operation, blue-water sea-keeping ability and unrivalled owner support.

This has not come about by chance – underpinning our remarkable success is an ethos of excellence reflected throughout our rich 35-year heritage and the launch of almost 5200 motor yachts that today can be seen cruising the oceans, seas, rivers and lakes of the world.

Our rigorous pursuit of the highest possible standards relates equally to the quality of materials, workmanship and technology that goes into building every new Riviera as it does to our commitment to our people and our ethical dealings, to our social and environmental sustainability, and to our renowned customer care.

This is a key part of what we like to call: 'the ultimate boating experience'.





The growing Riviera global network of dealers now spans 60 countries. Find a dealer near you at RivieraAustralia.com





Electronics play an ever-increasing role in the pleasure, performance and safety of luxury boats, and the choice of equipment that is available today is vast. In fact, selecting the equipment that meets your needs can be a very challenging task. R Electronics is here to help: we source the best systems and products from around the world; we are experts at matching technology to individual requirements and work closely with Riviera's design team and Riviera's global Dealer Network to create systems that maximise your pleasure and safety.

RElectronics.com.au



A passion for quality and good design steers everything we do at Riviera — and this is reflected in our exclusive range of clothing, accessories and decor items. If you love your Riviera, you'll feel at home with the Riviera Collection: casual yet stylish, comfortable, practical and made to withstand the rigours of boating life.

The Accessory and Decor Collection ranges from a storm jacket to stylish crockery. To make your luxury Riviera or Belize truly your own, we offer a wide choice of fabrics, finishes and color schemes that allow you to customise your yacht. Of course, we also have experienced designers who can advise and assist with your individual selection.

It is a real pleasure to own and use things that are aesthetically pleasing, work well and last – and because it is only appropriate that such qualities are found on board a Riviera, we supervise each individual interior scheme from creation to installation.

Riviera has the total leisure and style solution.

RivieraParts.com.au





THE RIVIERA EXPERIENCE

When you buy a Riviera or Belize, you really are joining a family.

Through our global network of dealers spanning some 60 countries and every continent of the world, owners of our world-class Riviera and Belize luxury yachts regularly receive exclusive invitations to our renowned educational workshops and seminars, as well as fun-filled social events to celebrate life with like-minded people.

This unrivalled owner support also extends to our special Experience events, where the sheer exhilaration of blue-water cruising can be enjoyed with the reassuring confidence of knowing experienced skippers and engineers are always close at hand.

Of course these are the passages that create very special memories that last a lifetime and, importantly, are often the catalyst for long-lasting friendships.

This is a key part of how we strive to help Riviera and Belize owners to enjoy all the rich and rewarding benefits that only boating can offer.



52 Enclosed Flybridge

SPECIFICATIONS

| | | |
|--|----------------------|-----------------------|
| Length Overall (inc. swim platform and bow sprit) | 17.26 m | 56' 8" |
| Lh to ISO8666 * | 16.15 m | 53' 0" |
| Beam (inc. gunwale) | 5.01 m | 16' 5" |
| Maximum Draft (inc. props) | 1.40 m | 4' 7" |
| Dry Weight ** (approx.) | 24,960 kg | 55,000 lb |
| Fuel Capacity *** | 3,500 L | 925 US gal |
| Water Capacity | 750 L | 198 US gal |
| Holding Tank Capacity | 400 L | 105 US gal |
| Sleeping Capacity | 6 persons | |
| Cockpit Area | 8.50 m ² | 91.5 ft ² |
| Mezzanine Deck | 2.47 m ² | 26.6 ft ² |
| Total | 10.97 m ² | 118.1 ft ² |
| Bridge Clearance | 5.30 m | 17' 5" |
| Standard Engine | | |
| Volvo Penta IPS950 x 2 | 533 kW | 725 hp each |

Riviera Clarification of Specification

*Length of the hull (Lh) to ISO8666: Includes all structural and integral parts (ie. the moulded length of the hull). It excludes parts that can be removed in a non-destructive manner without affecting the structural integrity of the craft, eg. pulpits, outdrives, driving platforms, rubbing strakes.

**Dry weight represents the estimated minimum weight of a boat with standard engines and options, no fuel or water on board, no equipment or provisions and no personnel. The stated dry weight may be exceeded.

***Denotes net tank capacity. For useable capacity do not rely on more than 90% of tank capacity. Actual capacity will vary according to boat trim and sea state.

Speeds are subject to normal weather conditions, fuel and/or water levels, passengers and equipment loads.

Refer to your Riviera Owner's Manual and your Dealer for height to hardtop and maximum height details.

The specifications in this document are not complete or definitive and are subject to change without notice and therefore may not be current. Riviera will not be liable (in contract, tort or otherwise) for any loss resulting from the inaccuracy of any information contained in this document.

Specifications may vary on a regional basis. Some images in this brochure may include non-standard or after-market options.

Warnings

Riviera is committed to building the best luxury cruisers, tailored to suit specific countries and their individual compliance laws and regulations. Riviera equipment and build specifications approved for one country may not be compliant with another country's safety and equipment regulations and as such those cruisers may have no recourse to Riviera extensive manufacturer's warranties.

Each country and State has different safety equipment standards.

It is important that you ensure the requirements in your jurisdiction are met prior to the vessel being used.

RIVIERA WARRANTY

LIMITED EXPRESS WARRANTY

Riviera Australia Pty Ltd. A.C.N. 139 663 906 (Riviera) makes this Limited Express Warranty (Warranty) to the original retail purchaser of a vessel manufactured by Riviera, provided the vessel is purchased from an authorized Riviera dealer and said first retail purchaser registers this Warranty with Riviera within 30 days of the purchase. This Warranty is the only warranty provided by Riviera, express or implied, with respect to any vessel manufactured by Riviera.

Five Year Limited Structural Warranty:

Riviera warrants to the first retail purchaser that for five (5) years after the date of delivery to the first retail purchaser, and for the period before it is delivered to the first retail purchaser, that the hull, deck, fly bridge and hardtop shall be free from structural defects due to material or workmanship, under normal non-commercial use, that result in any delamination or separation of the stringers or composite structure.

A structural defect includes the following:

- Structural failure of the fiberglass hull, deck, flybridge and hardtop;
- Structural failure of any parts glassed onto the above components; or
- Structural failure of the joints between any of the above components.

The structural warranty does not apply to the following:

- A water leak through the joints between the hull, deck, flybridge and hardtop;
- Fiberglass small parts failures;

- Parts that are not manufactured by Riviera;
- Interior failures, window or hatch failures;
- Damage resulting from misuse, abuse, negligence, improper docking, alteration, vandalism, accident or lack of performance of normal maintenance;
- Any charges incurred by any vessel returned to the factory, dealer or authorized agent for inspection prior to authorization of warranty repairs;
- The cost of removal or reinstatement of a part, or disassembly or reassembly of the unit of which it is a component;
- Heat and/or sun damage to the hull and/or gelcoat on hulls that are painted a dark color;
- Owners other than the first retail purchaser, or in relation to the Hull only, subsequent owners to whom the structural warranty of the Hull has been validly transferred in accordance with this Warranty;
- Any vessels sold to the first retail purchaser by anyone other than a Riviera dealer listed on <http://riviera.com.au> on the date of the purchase (Authorized Riviera Dealer); or
- Any item which Riviera has not been notified of within thirty (30) days of the issue becoming apparent.

The above list is not intended to be exhaustive and Riviera may, at its absolute discretion, elect to refuse any warranty claim whatsoever.

Vessels that go into a syndication or shared ownership program are entitled to the standard five year structural warranty, subject to fair wear and tear on the Vessel.

Transfer of Structural Warranty:

In reference to the structural warranty of the Hull ONLY, Riviera may agree in its sole and absolute discretion, to transfer the hull warranty to a subsequent owner of a vessel, who purchases the vessel from an Authorized Riviera Dealer, upon application and payment of a \$1000.00 Australian dollar transfer fee. Such transfer will only be effective upon confirmation in writing from Riviera. Where Riviera does approve the transfer of the remaining term of the hull warranty to a subsequent owner in writing, then such hull warranty will be transferred for a period of not more than a total period of five (5) years from the date an Authorized Riviera Dealer first delivered the vessel to the first retail purchaser.

One Year Limited Non-Structural Warranty

Riviera warrants that for one (1) year after the date of delivery to the first retail purchaser, and for the period before it is delivered to the first retail purchaser, all vessel components manufactured by Riviera shall be free from defects due to material or workmanship under normal non-commercial use. On components not manufactured by Riviera, Riviera shall assign to the first retail purchaser the warranties extended by those manufacturers as allowed.

The non-structural warranty does not apply to the following:

- Parts that are not manufactured by Riviera;
- Any charges incurred by any vessel returned to the factory, dealer or authorized agent for inspection prior to authorization of warranty repairs;

- The cost of removal or reinstatement of a part, or disassembly or reassembly of the unit of which it is a component;
- Heat and/or sun damage to the hull and/or gelcoat on hulls that are painted a dark color;
- The installation of any equipment by a dealer or other installer;
- Any installation of products not to Riviera's recommended specifications, because of the possibility that the use of these Products will exceed Riviera or government specification for overpowering, steering, handling, speed and safety;
- Owners other than the first retail purchaser;
- Any vessels sold to the first retail purchaser by anyone other than an Authorized Riviera Dealer;
- Any item which Riviera has not been notified of within thirty (30) days of the issue becoming apparent.

The non-structural warranty for vessels that go into a syndication or shared ownership program expires after the earlier of two-hundred and fifty (250) hours of use or six (6) months from the date of delivery to the syndication or shared ownership program, which ever occurs first.

RivieraAustralia.com

Our PASSION

To create the *ultimate*
boating experience.

