

MAJESTY  ***YACHTS***

MAJESTY 155

Your Window into Luxury

CHAIRMAN'S NOTE



Mohammed Hussain Alshaali
Chairman

Gulf Craft was born in 1982 out of a love for the sea, a passion for building and a firm belief that the success of the UAE should be based around productive industry – three key pillars that still support what the company does three decades since we first began.

33 years is a long time, and as the UAE has undergone a sea change in terms of progress, prosperity and prominence on a global stage, we are privileged to have been both a witness to this transformation and a fellow traveler – growing from a humble UAE-based boat builder to a globally respected shipyard with a presence in more than 40 countries worldwide.

Over the years we have measured our success on the continued confidence and loyalty of our customers and business partners and our ability to maintain a 100% delivery track record – successfully delivering more than 9,000 craft since we first began, across a spectrum that ranges from family fishing boats to the most luxurious superyachts.

The Majesty Yachts brand is in many ways Gulf Craft's flagship brand – representing the epitome of our engineering and design sophistication, our ability to translate our clients' vision into luxurious reality and our ambitions to build bigger and better yachts in the years to come.



LOOKING AHEAD



Erwin Bamps
CEO

As a company, Gulf Craft finds itself a very fortuitous position - both in time and space.

For over 30 years, we have witnessed tremendous achievements and now is the perfect time to look ahead to what is to come.

Geographically, Gulf Craft is positioned in a very strategic location - close enough to the traditional yachtmarkets of Europe and poised on the very edge of fast-growing Asia.

With the launch of the Majesty 155, Gulf Craft has proven its capabilities - in terms of innovation and ability to both anticipate and deliver what the global market wants in size and sophistication.

Gulf Craft continues to invest in equipment capable of handling larger and more technically challenging builds and skilled workmanship capable of meeting more demanding requests, proving Gulf Craft's long-term confidence in the global marine market and our own position within it.



Gulf Craft is
favored in both
regional and
international
markets



COMPANY HISTORY

In 1982 Mohammed Hussein Alshaali along with his brothers Abdullah and Jamal, and Dr. Mohammed Hamdan, their long-standing friend, established Gulf Craft in the United Arab Emirates-driven by an entrepreneurial spirit, a love for the sea and firm belief that the long-term success of the nation lay in the manufacturing industry.

Under Alshaali's guidance, Gulf Craft has grown from being a manufacturer of small pleasure craft in 1982, to a yacht manufacturer in 1991 and an award winning, globally respected builder of superyachts since 2000.

Gulf Craft is a major manufacturer of luxury yachts and fiberglass boats and one of the world's top 10 superyacht builders (as listed in the 2014 Global Order Book). Gulf Craft, an award-winning shipyard, has built a distinguished reputation as a manufacturer of a wide diversity of vessels, ranging from fishing and family boats of 27 feet to sport cruisers and semi-customized luxury superyachts of up to 155 feet.

With an annual production capacity of around 300 craft and expertise built over three decades in the business, Gulf Craft has a presence in all boating markets globally through its Majesty Yachts, Nomad Yachts, Oryx and Silvercraft brands. In addition, Gulf Craft provides worldwide maintenance and re-fit services as well as advisory on all aspects of boat ownership.

Gulf Craft is recognized in the marine manufacturing industry for its reliability, innovative design layouts, contemporary and elegant exterior styling - favored in both regional and international markets. An extensive network of international dealers represents the company in diversified markets - from Europe to Australia. Exhibiting at leading international boat shows keeps Gulf Craft's brands and superior product range at the forefront of market attention.



1982



With a modest 218,000 square foot facility in Ajman, UAE, Gulf Craft starts producing 14 foot runabouts for the local market.



1997

Launch of the Majesty 86.



1992

The Adora 53, the first complex yacht to be built by Gulf Craft is launched. This craft would remain one of the most desirable and popular yacht models in the Middle East for years to come.



2000

A new 100,000 square foot facility producing top-quality yachts, pleasure boats, and rapid transport vessels is launched in the Maldives.

2001

Gulf Craft's largest manufacturing facility opens in Umm Al Quwain in the Middle East, complete with 150 ton travel lift and launching bay. Launch of the Millenium 118, Gulf Craft's first superyacht over 30m.



2003

Building on the success of milestone projects like the Majesty 86 and Millennium 118, Gulf Craft launched the brand and product range Majesty Yachts in an ambitious drive to develop the region's first full line-up of luxury yachts.

MAJESTY  **YACHTS**



2008

Born from the 27 years boat building experience, the Silvercraft range is established to represent Gulf Craft's wide and diverse range of smaller family and fishing boats.

SILVERCRAFT

2012

Gulf Craft launches its largest superyacht ever built – the Majesty 135 – further solidifying the company's position as a major player in the prestigious global superyacht market.



2015

Gulf Craft launches its present-day flagship Majesty 155, showing customer confidence in the yard's products.

Catering to an evergrowing demand for long-range, fuel efficient yachts, Gulf Craft introduced the Nomad Yachts brand.

2006



Gulf Craft introduces the Oryx product line to fill an existing gap between large yachts and small pleasure craft. Specializing in sport yachts and open cruisers, it gains recognition among a younger target market.

ORYX

2011

Gulf Craft launches the Gulf 95 Exp at the Dubai International Boat Show – presenting a new approach to explorer yacht design that maximizes onboard living space and comfort.

2014

Gulf Craft has clinched a top 10 ranking among the world superyacht-building shipyards, according to the Boat International Global Order book report.

Majesty 105 was announced as a finalist of The World Superyacht Awards 2014

// Majesty 155 Storyline

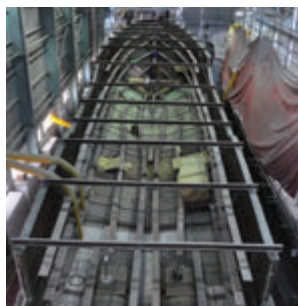
2012 January

Beginning of 2012, Gulf Craft launched the first Majesty 135 and it was already planning for a bigger superyacht, the Majesty 155.



2013 January

Gulf Craft starts laminating the Majesty 155 hull.



2013 August

Gulf Craft releases the first Majesty 155 hull.



2012 December

Using its in-house technical skills, Gulf Craft brings out the mold of the Majesty 155.



2013 March

Gulf Craft announces the Majesty 155 at the Dubai International Boat Show.



2013
September

Using Monaco Yacht Show as another key platform for Gulf Craft's important announcements, Gulf Craft reveals the interior design of the Majesty 155.



2014
March

Gulf Craft builds a mockup of one of the five staterooms in the Majesty 155 for the Dubai International Boat Show.



2015
May

The Majesty 155 goes on its first sea trial.



2014
January

Gulf Craft in-house design studio carefully selects world class material that will be fitted in the superyacht.



2015
April

Gulf Craft successfully launches the Majesty 155.



Each yacht is
an individual
project, finished
uniquely to match
the desires of its
owner



REFINED BOAT BUILDING SKILLS PERFECTED OVER 30 YEARS

At Gulf Craft we believe each yacht we build is unique - an individual and complex exercise in engineering, design and craftsmanship. Our shipyard does not resemble a production line - each yacht is an individual project, finished uniquely to match the desires of its owner.

Our yachts are developed using detailed computer modeling and using the latest technologies such as CNC and plasmajet cutting, but the human hand still lends the final touches and it is the human eye that grants the final seal of approval after the industrial tests and standards are stamped. We value craftsmanship and it is a skill we have nurtured for over three decades.

Today Gulf Craft employs nearly 2,000 employees across its shipyards and manufacturing facilities in Ajman and Umm Al Quwain in the UAE and the Maldives. Globally, Gulf Craft ranks 10th on the 2014 Global order book of superyacht shipyards.

Gulf Craft produces yachts to strict international maritime and industrial standards, such as ABS, RINA and our manufacturing facilities have an annual production capacity of around 300 craft, and occupies launching bay and travel lift capacities to build superyachts up to 50 m.

Our employees are experts in their field - from the naval engineers who determine how well our yachts perform in high seas to the carpenters who minutely match the grain of the glossy veneer used in onboard cabinetry.

We invest in training our staff and upgrading their skills continuously, so that our employees build a long career within the company and the company benefits by retaining their expertise.













OPPOSITE Profile
ABOVE CLOCKWISE During Sea Trial.
 Garage. Saloon Balcony





OPPOSITE Main Saloon
ABOVE CLOCKWISE Dining Area. Main Lobby - Elevator.
 Galley







OPPOSITE Owner's Stateroom
ABOVE CLOCKWISE Owner's Balcony. Owner's En Suite.
 Owner's Seating Area



ABOVE CLOCKWISE Double Guest Stateroom. Double Guest En Suite
Twin Guest Stateroom. Twin Guest En Suite





ABOVE CLOCKWISE Jacuzzi. Panoramic Saloon
Sun Deck. Sun Deck

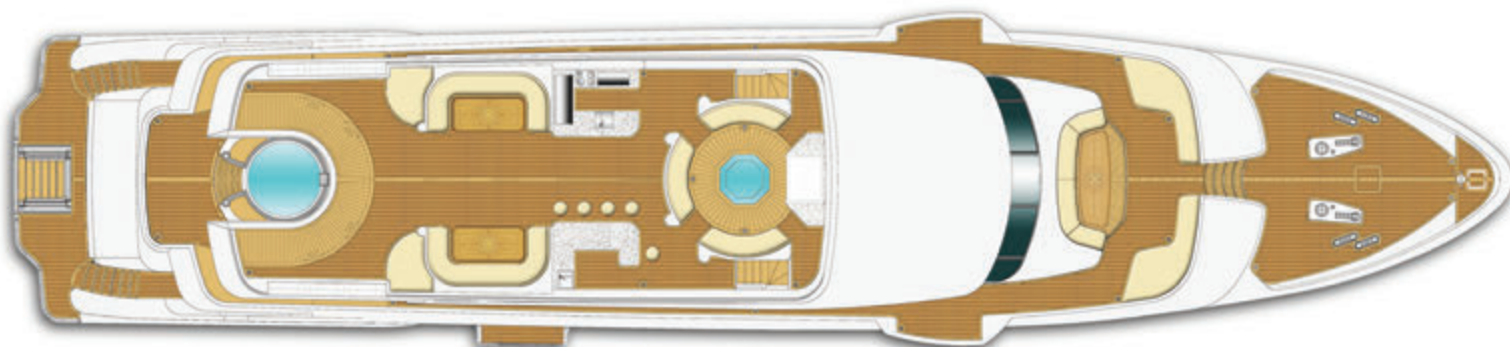
TECHNICAL SPECIFICATIONS

Most recent update: July 2015. Please see your dealer to learn about specifications currently being used.

| | |
|----------------------|--------------------------|
| LENGTH OVERALL | 154 FT 1 IN (47.00 M) |
| LENGTH WATERLINE | 130 FT 3 IN (39.70 M) |
| BEAM | 31 FT 6 IN (9.60 M) |
| DRAFT | 6 FT 8 IN (2.10 M) |
| DISPLACEMENT | 380 T APPROXIMATELY |
| FUEL CAPACITY | 15,000 US GAL (56,780 L) |
| FRESH WATER CAPACITY | 2,230 US GAL (8,440 L) |
| BLACK WATER CAPACITY | 500 US GAL (1,900 L) |
| GREY WATER CAPACITY | 500 US GAL (1,900 L) |
| ENGINES | 2 X 2,011 HP |
| GENERATORS | 2 X 125 KW, 230/400V |
| EMERGENCY GENERATOR | 16 KW |
| VESSEL TYPE | FRP LUXURY MOTOR YACHT |
| HULL TYPE | DISPLACEMENT |

Please note this is the technical specifications of Majesty 155. Gulf Craft reserves the right to add, modify or delete specifications and features at any time as part of our continuous product improvement programme.





SUN DECK



UPPER DECK



MAIN DECK



LOWER DECK

The layouts shown are some of the possible options and do not necessarily correspond to the standard version.





ABOVE Profile
Umm Al Quwain, UAE



AFTER-SALES SERVICE

Owning a yacht or boat is a long-term commitment. Which is why it's important to always make sure it is in the best of hands, especially when it needs servicing or refurbishment. Reputation and experience are usually the first things that come to mind when your boat needs work and that's where Gulf Craft makes a difference.

At Gulf Craft, our after-sales centers follow the same standards and commitment to international quality that our manufacturing facilities adhere to. We draw on our 33 years of experience in boat building, engineering and refit to understand the after-sales needs of our customers and take care of them so that your craft retains its aesthetic, performance and resale value.





P.O. Box 666 Sheikh Khalifa Bin Zayed Street, Ajman, United Arab Emirates

T. +971 6 7406060, F. +971 6 7406062, gci@gulfcraftinc.com

www.gulfcraftinc.com

www.majesty-yachts.com

Pictures in this catalogue may be taken from different vessels of the same type for example purpose only. Performance estimates are given in good faith, but are in no way guaranteed. Dirt on the hull, damage to the propellers, external water and air temperatures and added weight, fuel and water carried can all adversely affect performance. For these and other reasons we can give no performance guarantees. Data and characteristics are not binding: details, colors, descriptions and illustrations are for information purpose only. The drawings and pictures may include specific equipment or modifications which are not part of the standard specifications of the vessel. Standard specifications may be defined differently in different sales territories. Gulf Craft Inc. reserves the right to make any changes in specifications or equipment without prior notice. In case on any inconsistencies between specification sheet, product catalogue and price list, the price list prevails. Customers are recommended to contact one of our sales representatives to reconfirm standard and optional features on the vessels.

by *Gulf Craft*