



SQUADRON 50





SQUADRON 50

COMPARE THE SHEER AMOUNT
OF INTELLIGENT, USABLE SPACE
THIS PERFECTLY FORMED
SQUADRON HAS TO OFFER OVER
YACHTS OF A SIMILAR SIZE, AND
YOU BEGIN TO APPRECIATE ITS
TRULY INNOVATIVE NATURE

Here, beautiful rooms have been created, not mere cabins. In terms of both equipment and styling, the huge, airy saloon is an example of interior design at its very best, framed by enormous panoramic windows. The aft positioned galley places you right at the heart of the action and helps deliver the perfect, sociable alfresco environment. The spectacular, light-filled master cabin with its panoramic hull windows and overhead glazed panels boast dimensions that would shame many 60ft boats - a testament to Fairline's design initiatives.

You'll also find two beautifully appointed guest cabins, as well as two large en suite bathrooms. An optional fourth cabin with feature window can be easily accessed from the cockpit. The flybridge is larger than previously seen on a boat of this size, providing plentiful areas for entertaining and relaxing. Fairline's Tender Launch System is designed for effortless tender handling and can accommodate watercraft up to the size of a Williams 285 Jet RIB.





TEQUESTA POINT
BRICKELL KEY









ENGINE RECOMMENDATIONS (TWIN)

— 1,340MHP TO 1,420MHP —

2 X VOLVO PENTA D11-670 EVC SHAFT DIESEL 670MHP EACH: 30 KNOTS

2 X CATERPILLAR C12-710 SHAFT DIESEL 710MHP EACH: 31 KNOTS

PRINCIPAL DIMENSIONS

- Length overall (inc. pulpit): 51ft (15.55m) - Length overall (ex. pulpit): 49ft 1in (14.96m)
- Beam (inc. gunwale): 14ft 8in (4.47m) - Number of berths: 6 - 7 - Draught: 4ft (1.21m) unloaded - Height above waterline (inc. arch + nav. light mast): 19ft 1in (5.83m) - Transport height: 16ft 5in (5m) - Dry weight (approx.): 18.80 tons (19,100kg)
- Fuel capacity: 503 gals/604 US gals (2,288L) - Water capacity (inc. calorifier): 121 gals/145 US gals (550L)

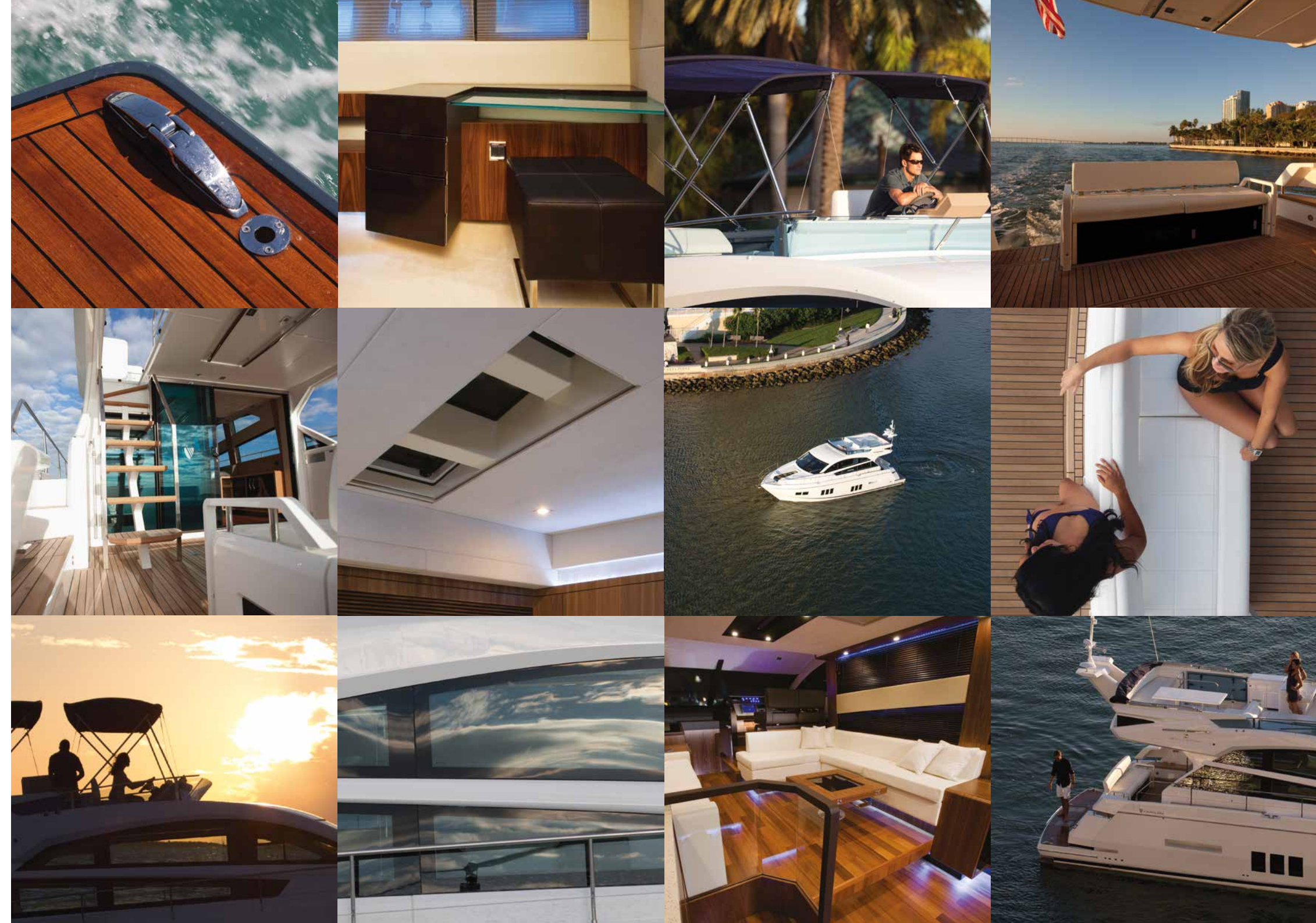




A
PRODUCT OF FAIRLINE'S
RELENTLESS PURSUIT
OF
• INNOVATIVE DESIGN •

KEY FEATURES

Spacious flybridge with bar and fridge, forward seating, sunpad conversion and teak table convertible to sunlounger option - Aft galley with raised saloon - Power-drop saloon windows option - Spacious forward master cabin with king size bed and overhead glazing - Port and starboard mid-ship guest cabins (starboard with double bed conversion) - Lazarette or crew cabin with full-width aft glazing option - Tender Launch System option - Twin transom gates



PRINCIPAL CREDITS

The creation of this catalogue would not be possible without the willing help of a great many people and companies who contribute their individual skills and expertise whether supplying boats, facilities or other invaluable support to the project each year.

Fairline Boats Ltd and their creative marketing agency, Cream of the South, extend grateful thanks to them all.

PHOTOGRAPHY

Targa 38, Targa 48, Targa 50, Squadron 48, Squadron 60, Squadron 65 - Tim Hetherington

Squadron 42, Squadron 65, Squadron 78 - Mike Jones

Targa 62, Squadron 50, Squadron 78 - Billy Black

Interior images - Mike Jones & Tim Hetherington

Acknowledgements: Rumpus Resort

Special thanks to: Cheryl Bostock

Published by Fairline Boats Ltd, Oundle, PE8 4HN, England

Tel: +44 (0) 1832 273 661 Fax: +44 (0) 1832 273 432 www.fairline.com

Fairline Boats Ltd constantly seek ways of improving specifications, design and production. Therefore, alterations take place on a continuous basis. Whilst every effort is made to produce up-to-date literature, the descriptions, specifications, illustrations and photographs in this brochure should not be regarded as a definitive guide to current specifications, nor does it constitute an offer for the sale of any particular boat.

Appointed distributors and dealers are not agents of Fairline Boats Ltd and have absolutely no authority to bind Fairline Boats Ltd by any express or implied undertaking or representation.

Performance estimates are given in good faith, but are in no way guaranteed for any particular boat. Dirt on the bottom of the boat, damage to the propellers, engine tuning, external water and air temperatures and the weight of crew, fuel and water carried can all adversely affect performance. For these and other reasons we can give no performance guarantees.

© FAIRLINE BOATS LTD 2014. ALL RIGHTS RESERVED. FAIRLINE, TARGA AND SQUADRON ARE REGISTERED TRADE MARKS OF FAIRLINE BOATS LTD. TOGETHER WITH ALL TEXT AND IMAGES CONTAINED IN THIS PRINTED MATERIAL, THEY ARE PROTECTED BY COPYRIGHT AND MAY NOT BE REPRODUCED IN ANY FORM WITHOUT THE EXPRESS WRITTEN PERMISSION OF THE COPYRIGHT OWNERS. E & OE.

444/MC/4230/EN



