



P.O.Box 666, AJMAN - UAE. TEL: +971 6 7406060 FAX: +971 6 7406062
CONTACT@MAJESTY-YACHTS.COM WWW.MAJESTY-YACHTS.COM

MAJESTY 105



MAJESTY 105





BOW SEATING AREA



FLY-BRIDGE



MAIN SALOON



DINING



OWNER'S STATEROOM



OWNER'S EN SUITE



OWNER'S EN SUITE



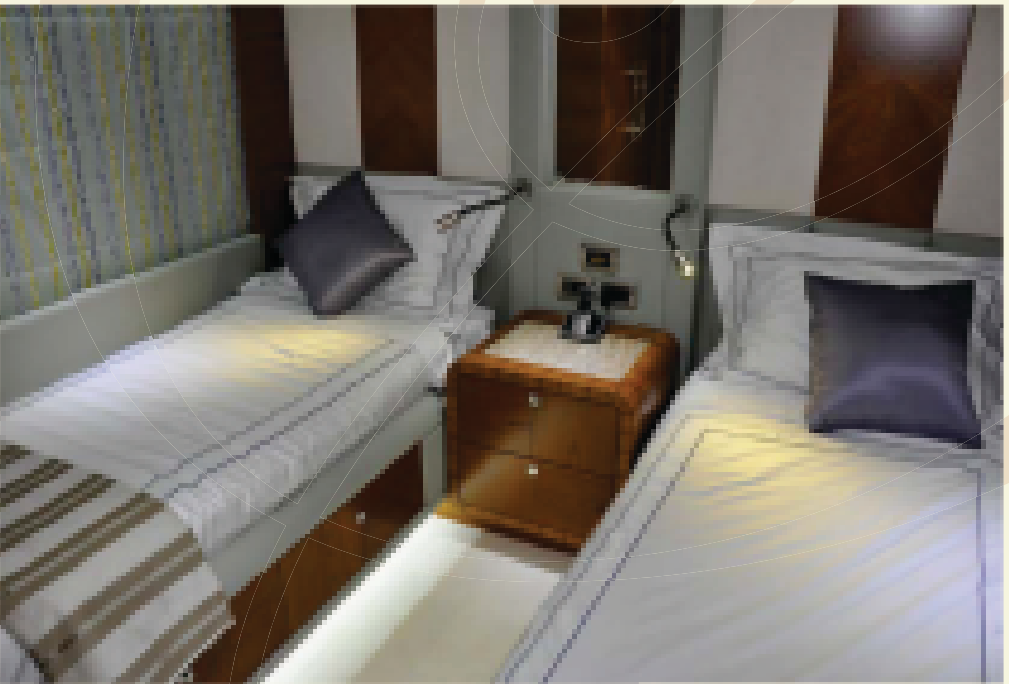
OWNER'S OFFICE



VIP STATEROOM



VIP STATEROOM

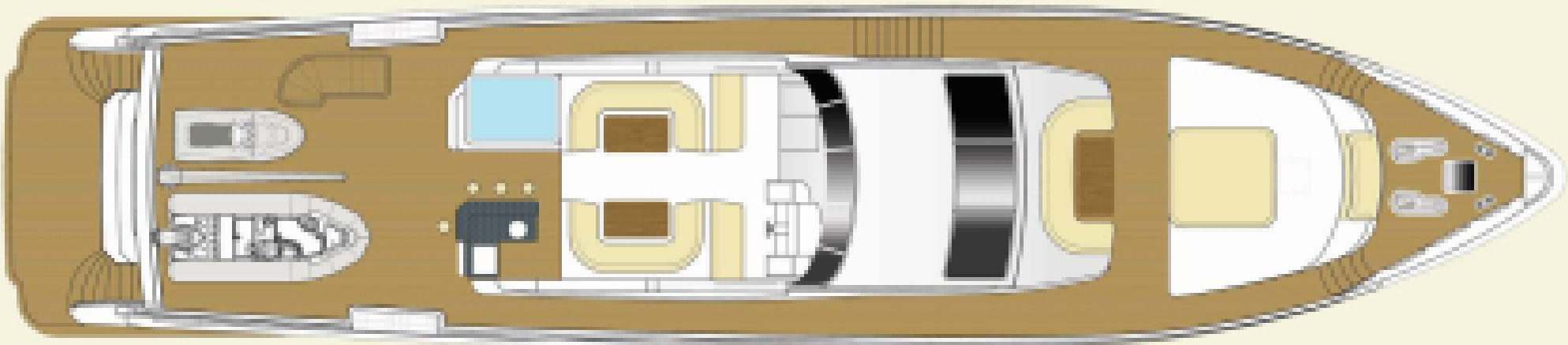


TWIN GUEST STATEROOM



VIP EN SUITE

Deck Arrangement



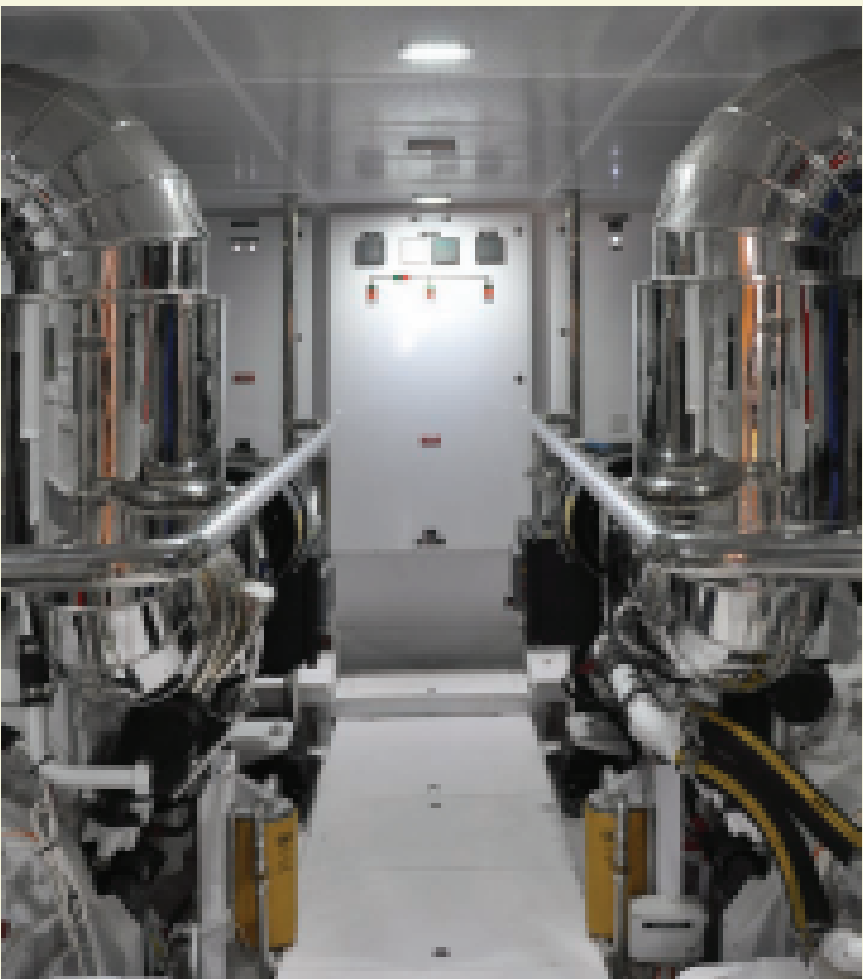
Fly-Bridge



Main Deck



Lower Deck



TECHNICAL DATA

Length Overall	107' (32.68 m)
Maximum Beam	23' 3" (7.13 m)
Draft	5' 10" (1.78 m)
Fuel Capacity	4,000 US gal (15,140 l)
Water Capacity	800 US gal (3,020 l)
Construction	FRP
Displacement	103 tons approx
Accommodation	5 Staterooms (10 Berths) 2 Crew Cabins (4 Berths) 1 Captain's Cabin
Bathrooms	5 En suite, 2 Crew, 2 Day Head
Generators	2 x 50kW
Power Options	2 x 1,825 - 2 x 2,450 HP

Pictures in this catalogue may be taken from different vessels of the same type for example purpose only. Performance estimates are given in good faith, but are in no way guaranteed. Dirt on the hull, damage to the propellers, external water and air temperatures and added weight, fuel and water carried can all adversely affect performance. For these and other reasons we can give no performance guarantees. Data and characteristics are not binding; details, colors, descriptions and illustrations are for information purpose only. The drawings and pictures may include specific equipment or modifications which are not part of the standard specifications of the vessel. Standard specifications may be defined differently in different sales territories. Gulf Craft Inc. reserves the right to make any changes in specifications or equipment without prior notice. In case of any inconsistencies between specification sheet, product catalogue and price list, the price list prevails. Customers are recommended to contact our sales representative to reconfirm standard and optional features on the vessels.

DECK FITTING

Main deck, Side Gunnel Area, Swim platform and aft Cockpit, Side pantograph door on Main deck Port side gunwale to and Crew lounge, Elliptical side windows (10) and stainless steel framed openable elliptical Port holes (11), Sea side view Port hole cum windows (2), Port and Starboard side bulwark doors at aft and mid ship, Side windows (12mm thickness toughened glass), Pilot house wind screen with stainless steel trims (12mm thickness toughened glass), Stainless steel framed sliding door to Saloon, Water tight side deck doors on port and starboard side, Deck hatch access to chain locker, Forward deck hatch access for Owner's stateroom, Engine room Water/Gas tight door, Lockable water tight door from aft cockpit to crew lounge, Flybridge wind deflector screen, Stainless steel Port and Starboard side anchor pockets, Stainless steel Hauser pipes (6), Stainless steel deck cleats (6), Stainless steel hand rails (AISI 316L, Stainless steel tube/pipe), Stainless Steel Stanchions, Stainless steel Transom doors with signage 105, Wind screen wipers with fresh water connection, LED deck lighting and Flood lights, Fuel, Water fillers and Black tank overboard discharge on side deck, Storage within aft seat moulding, Ceiling lights (at aft cockpit), Locker with Fire damper pull-pin cables, Emergency fuel shutoff valve pull-pin cable, Engine room fire cylinder pull cable, Scupper drains will be provided as per drawing plan, Forward area fiber glass sofa seats with upholstered seats.

AFT COCKPIT

Stainless steel framed sliding door to main saloon, Teak table with stainless steel bases, Upholstered sofa seats, Stainless steel stanchions, Integral stairway to flybridge, Lockable water tight door to crew cabin, Stainless steel transom doors, Steps down to bathing platform, Hot and cold water transom shower, Deck wash, 380/220V 3-Phase, 50Hz Shore power inlet cable and cable storage, Locker with port and starboard side fire dampers, pull-out pins, engine room fire extinguisher pull-out pin and fuel shutoff valve pull-out pin cable, LED lighting to fly bridge staircase, Ceiling speakers linked with Saloon entertainment system (2), Self draining.

FLY-BRIDGE

Stainless steel framed sliding door to wheel house, Stairway from aft cockpit, Wind deflector screen, Fully fitted wet bar with corian top, Stainless steel sink and tap with hot and cold water supply, Refrigerator, Bar stools (3), Speakers linked with Saloon entertainment system (2), Upholstered sofa seating on port and starboard side, Storage under sofa seats, Upholstered helm seatm, FRP hard top, Lighting on underside of hard top, Stainless steel stanchions to hard top, Stainless steel railings, Self draining.

FLY-BRIDGE HELM

Steering wheel, Port and Starboard engines displays, Trim tab gauge and switches, Rudder angle gauge, Winch control panel, Forward and aft search light switch, Bow thruster control, Navigation displays, Port and Stbd engines diagnostic, shutdown and ignition keys, Engine Throttle, Auto pilot display, Auto pilot control head, VHF hand set, Magnetic Compass, Switches of Flood light, Fly bridge ceiling lights, Gauge lights, Deck lights, Horn.

SALOON

LED TV 55", Home Theater system (Life style 48 Series), Satellite Receiver, Stainless steel framed sliding door to cockpit, Port and starboard side sofas, Sofa side tables, Coffee table, Display shelves, Windows with curtains Curtains to main entrance door, Air conditioning with control switch, Architectural and LED decorative lighting Lighting switches and AC sockets, Veneer/Leather/Fabric wall panels, Fitted carpet.

MAIN DINING

Dining table, Dining chairs, Port and starboard side counters, Crockery shelves, Side windows with curtains, Architectural lighting, Lighting switches and AC sockets, Air conditioning with control switch Veneer/Leather/Fabric wall panels, Wooden flooring.

GALLEY

Corian counter top, S.S.Sink with hot and cold water supply, Storage lockers with shelves, Fridge, Freezer Dish washer, Oven, Induction hub, Teppan yaki, Deep fryer, Vinyl flooring, Stair case to lower deck forward cabins, Side window with pleated blinds, Architectural lighting, Lighting switches and AC sockets, Air conditioning with control switch.

WHEELHOUSE

Steering wheel, Engine room exhaust fan control switch, Bilge alarm switch panel, Navigation displays, Port and Starboard engine displays, Trim tab gauge and switch, Magnetic Compass, Rudder angle gauge, Wind shield wiper controls, Bow thruster control switch, Auto pilot display, Engine throttle, Port and Starboard engine warning, ignition, diagnostic, shutdown controls, Bilge pump switches, Navigation switches of horn, anchor light, navigation light, pilot house light, dash board light, under water lights and gauge light, Search light switches Forward and aft Search light selector switches and control switches, Hydraulic steering switch panel, VHF Radio hand set.

PANTRY

Lockable water tight side pantograph door to side deck, Entrance door to Galley, Staircaseto wheel house Bottle cooler, Coffee machine, Access door to electrical cabin, Veneer/Leather/Fabric wall panels, Architectural lighting.

MAIN LOBBY

Lockable water tight side pantograph door to side deck, Entrance door to day head toilet, Entrance door to owner's cabin, Staircase to lower deck cabins, Luggage cabin, Veneer/Leather/Fabric wall panels, Architectural lighting.

DAY HEAD TOILET

Wash basin and tap with hot and cold water supply, Electric toilet, Extractor fan, Mirror, Sanitary accessories,Architectural lighting, Lighting switches and AC sockets.

OWNER'S STATEROOM

LED TV 46", Home Theater system (Life style 35 Series), Satellite Receiver, Large double bed with drawers & mattress, pillows and bedspreads, Bed side tables, Wardrobes, Desk with Drawers, Counter table, Sofa seats, Sofa seat side table, Side windows with curtains, Air conditioning with control switch, Architectural lighting, Lighting switches and AC sockets, Veneer/Fabric/Leather wall panels, Fitted carpet, Entrance door to bath cabin.

Owner's En Suite

Wash basin and tap with hot and cold water supply (2), Mirror, Cabinet, Bidet and Electric toilet, Hot and cold water shower mixer, Jacuzzi, Extractor fan, Frosted glass door to shower cabin, Architectural lighting, Sanitary accessories, Open shelves, Lighting switches and AC sockets.

GUEST LOBBY

Stairs from main lobby, Architectural lighting, Lighting switches, Veneer/Fabric/Leather wall panels, LED lighting to steps, Entrance door to port double guest cabin, Entrance door to starboard double guest cabin, Entrance door to port twin guest cabin, Entrance door to starboard twin guest cabin, Storage locker.

DOUBLE GUEST STATEROOMS (STARBOARD & PORT SIDE)

LED TV 32", Satellite Receiver, Large double bed with drawers (4) & mattresses, pillows and bedspreads, Bed side tables, Storm shutter storage, Open shelves, Wardrobe, Side window with curtain, Air conditioning with control switch, Architectural and LED decorative lighting, Lighting switches and AC sockets, Veneer/Fabric/Leather wall panels, Fitted carpet, Entrance doors to en suite.

Double Guest En Suites

Wash basin and tap with hot and cold water supply, Storage, Open shelves, Mirror, Port hole with pleated blinds, Extractor fan, Electric toilet, Glass doors to shower cabin, Hot and cold water shower mixer, Sky shower Architectural lighting, Sanitary accessories (tooth brush holder, soap holder, brush holder, towel hook and towel rail), Lighting switches and AC sockets.

TWIN GUEST STATEROOMS (STARBOARD & PORT SIDE)

LED TV 26", Satellite Receiver, 2 x Single beds with drawers & mattresses, pillows and bedspreads, Bed side table, Wardrobe, Storage, Port hole with curtain, Air conditioning with control switch, Architectural lighting Architectural & LED decorative lighting, Lighting switches and AC sockets, Veneer/Fabric/Leather wall panels Fitted carpet, Entrance door to en suite.

Twin Guest En Suites

Wash basin and tap with hot and cold water supply, Mirror, Open shelves, Electric toilet, Hot and cold water shower mixer, Sky shower, Extractor fan, Glass door to shower cabin, Porthole with pleated blinds, Sanitary accessories, Architectural lighting, Lighting switches and AC sockets.

CAPTAIN'S CABIN

Bed with mattress, pillows and bedspreads, Bed side table, Wardrobe, Porthole with pleated blinds, Storage under the bed, Air conditioning with control switch, Architectural lighting, Lighting switches and AC sockets, Veneer/Fabric/Leather wall panels, Vinyl flooring, Entrance door to en suite.

Captain's Cabin En Suite

Wash basin and tap with hot and cold water supply, Mirror, Electric toilet, Hot and cold water shower mixer, Extractor fan, Sanitary accessories (tooth brush holder, soap holder, brush holder, towel hook, and towel rail), Architectural lighting, Lighting switches and AC sockets.

CREW LOUNGE

Corian counter top, Stainless steel sink and tap with hot and cold water supply, Refrigerator, Hob, Microwave Hood, Washing machine, Overhead storage lockers, Sofa seat and table, Port holes with pleated blinds, Stair case to aft cockpit, Lockable water tight door leading to swim platform, Lockable water/gas tight door to engine room, Air conditioning with control switch, Architectural lighting, Lighting switches and AC sockets, Veneer wall panels, Entrance door to captain cabin, Entrance door to store cabin, Vinyl flooring.

FORWARD CREW CABINS (1 & 2)

2 x Single bunk beds, Open shelves, Wardrobe, Port hole with curtains, Air conditioning with control switch, Architectural lighting, Lighting switches and AC sockets, Veneer/Fabric/Leather wall panels, Vinyl flooring Entrance door to ensuite.

Crew Cabin En Suites

Wash basin and tap with hot and cold water supply, Electric toilet, Medicine cabinet, Niche, Hot and cold water shower mixer, Extractor fan, Foldable glass door to shower cabin, Sanitary accessories (tooth brush holder, soap holder, brush holder, towel hook and towel rail), Vinyl flooring, Architectural lighting, Lighting switches and AC sockets.

MISCELLANIOUS

Fenders (6), First Aid kit (1), Fire blanket (1), Tool kit (1), Mooring ropes, Boat hooks (2), Life rings (2).

ELECTRICAL SYSTEM

Electrical system of the boat is 3-phase, 380/220V, 50Hz, Main power supplied by two generators, Generator 40Kw, 50Hz (2), 3-phase dockside connection (100Amp) with cable and cable master system, Main switch board system equipped with magnetic contactors, overload protections and short circuit protections, Outgoing circuits protected by circuit breakers, Battery isolation switches, 12V, 200Ah Batteries for Port side engine (2), 12V, 200Ah Batteries for Starboard side engine (2), 12V, 200Ah Batteries for Service (2), 12V, 200Ah Batteries for Emergency (2), 12V, 100Ah Batteries for Port Generator (2), 12V, 100Ah Batteries for Starboard Generator (2), Batteries are charged by two battery chargers, 80Ah, 24V Battery charger for Engine Batteries, 100Ah, 24V Battery charger for Service and Emergency batteries, Main panels are placed in engine room, 380/220V AC Main distribution panel, 220V AC Sub distribution panel, 24V DC distribution panel, Secondary distribution panels, Main deck 220VAC distribution panel, Lower deck 220VAC distribution panel, 12&24VDC Navigation panel, Tank sentry monitoring panels located in engine room, Fuel tanks, Fresh water tank, Black water tank, Grey water tank, 220V AC Power outlets in all cabins, Cathodic protection provided by cross bonded zinc anodes, Port and Starboard Generators isolation battery switches and interconnection panel, Port and Starboard engines isolation switches and interconnections panel.

POWER AND DRIVE SYSTEMS

Power assisted electro hydraulic steering system, Direct shaft drive through tunnel, Propellers, 5-blade, AB2 material (2), Rudders (2), P-brackets (2), Duplex steel tail shafts (2), Hydraulic trim tabs (2), Trim tabs switches and gauges at lower helm and main helm position, Engine Throttle, Seawater strainers for main engines (2).

NAVIGATION SYSTEM

14" Multi display monitors (2), Raymarine (G Series), GPS (2), 72 NM Radars (2), Depth sounder (2), Speed logs and wind speed (dual stations), Auto pilot (dual stations), VHF Radio (dual stations), Navigation system upgrade is available on request as optional), Mast Area– equipped with Radars, Satellite antenna, Wind speed, Navigation lights, Lightening arrester, Search light (fwd and aft) and Horn, Alarm Monitoring System for all tanks, water maker, smoke detectors and bilge alarm, Camera monitoring system.

FUEL SYSTEM

Fuel capacity 4000 US Gallons (15141.6 liters), Port side fuel tank capacity 1839 US gallons (6961.372 Liters), Star board side fuel tank capacity 1839 US gallons (6961.372 Liters), Fuel day tank 322 US gallons (1218.903 Liters), Integrated FRP fuel tanks in engine room, Port and Star board side fuel tanks interconnection with Fuel day tank, Fuel fillers on port and starboard side decks, Manual fuel shutoff valve pull-out pin cable fitted at aft cockpit, Fuel filters for engines/generators, All tanks provided with manhole covers, ventilation pipes and connection pipes to manifold, Isolation valves to fuel manifold, Interconnection fuel lines are made of stainless pipes, Electric tank senders for all fuel tanks.

FRESH WATER SYSTEM

Water tank capacity 800 US Gallons, Pressurized hot and cold water system, 24VDC Fresh water pump (1), 220VAC Fresh water pump (1), Water heaters capacity 60Lt (2), Water level monitoring panel located in the engine room, Water maker capacity 140L/h for fresh water (1), Water filler on side deck, Electric tank sender 26mm Mepla piping throughout supplying all outlets, 32mm Mepla piping from tank to manifold, Dock connection for shore water supply on aft swimming platform with pressure regulator, Fresh water deck wash connection at aft swim platform and forward area.

FIRE EXTINGUISHING SYSTEM

Fixed fire extinguisher in engine room connected with pull cable to cockpit, Fire alarm and Fire bell at wheel house and engine room, Smoke detectors in all cabins, Hand operated portable fire extinguishers (12) installed for immediate use in all cabins, Mechanical pump with bypass valves for fire and bilge purpose (1), Fresh water line connection to fire & bilge manifold for priming and cleaning, Plumbing are made of CuNiFe/ Stainless steel pipes.

BILGE SYSTEM

Bilge water high level alarm system,Electric submersible bilge pumps 2000 GPH with float switches fitted in each water tight compartment at beneath the following areas:Forward crew cabins, Guest lobby, Port &Starboard double guest cabin, Engine room, Crew lounge, Rudder compartment, Bilge suction lines are connected to manual bilge pump and mechanical pump with bypass valves for suction of the bilge water from engine room and rudder compartment.

AIR CONDITIONING SYSTEM

Chilled water air conditioning system with capacity 260 000 BTU, All compressors on 380 VAC, 3-phase, All air handlers on 220VAC, Single phase, All cabins Air handlers are connected with Chillers system, Chiller water pumps (2), Sea water pumps (2), Air conditioning control switches in all cabins, Plumbing lines are made of PVC pipes, Pipe lines are well insulated.

SAFETY EQUIPMENTS

Solas Life jackets (15), 24" Life rings (2), Life rafts - 2 x 8 persons capacity each side- (4), First Aid kit (1), Fire blanket (1), Fire dampers safety on Port and Starboard side vent shaft, Portable fire extinguishers as per plan.

OPTIONS

Hydraulic Swim platform transformer, Jacuzzi system, Stern thruster 25HP, Crane capacity 800 Kg,TRAC 370 Stabilizer system, Spare Propellers, Spare Shafts, Teak decking at flybridge, Intercom telephone system, THURAYA Satellite Phone/Fax, 12 x Under water lights, marble flooring and counter top in kitchen, bath cabins and bar, Multi zone Audio/visual + Automation system, Dinghy and Jetski, Upgraded Navigation system (customer request), Night vision camera monitoring system.

USA SPECIFICATIONS AVAILABLE UPON REQUEST.

MAJESTY YACHTS

Majesty Yachts

Gulf Craft launched its range of luxury fly-bridge yachts in 2004, and today features an innovative and extensive range of yachts from 44 feet to 135 feet. Majesty Yachts relies on a in-house design team, as well as on Dutch, Italian, British and Australian designers, catering to diverse global tastes in exterior styling and interior design. The Majesty Yachts team combines technical know-how, practical experience, and decades of steady investment to deliver personalized luxury.

Operating from a 500,000 square foot modern facility, Majesty Yachts are built to leading international standards, including ABS, MCA, BV and RINA, and under strict supervision such as Lloyds, ensuring no compromise between luxury and safety. Majesty Yachts has also built to charter specifications, the US Coast Guard and Australian Coast Guard specifications.

Technologies used in the Majesty Yachts range include advanced composite construction and vacuum infusion processes, water-jet drives engineered on large yachts, and gyro marine stabilizers.

Some of the recent Majesty Yachts accomplishments include the Majesty 130, which notched up 10,000 nautical miles in her maiden voyage, and the introduction in the South American market of the Majesty 50 and Majesty 56.

Owners of Majesty Yachts enjoy luxury that's meaningful, customization without the price premium, and performance-based sea keeping. The result is that Majesty owners are today cruising four continents with the confidence in a yard that's committed to sustainably growing its market by selling its yachts, and offering unforgettable yachting experiences.



Majesty 101



Majesty 121



Majesty 125



Majesty 135



Gulf Craft is the Middle East's and Asia's leading manufacturer of leisure boats and yachts. Founded in the United Arab Emirates in 1982, Gulf Craft today exports a range of vessels from 26 foot runabouts to 135 foot triple deck luxury yachts, making it one of the most diverse portfolios in the leisure marine industry.

With Gulf Craft's nearly 30 prolific years building boats, and 135 years of management experience in the industry, we have learned the art of combining seafaring passion and luxury with sensible manufacturing, dutiful craftsmanship, and exacting international standards. It is in this space that we excel. Gulf Craft is a company built on the soil of Arabian heritage, and in the honored memory of seafaring forefathers. Forefathers that respected the principle that proper form is in its effectiveness.

Gulf Craft employs 1,400 skilled craftsmen and owns state of the art manufacturing and servicing facilities across 5 sites. This enables us to in-house major production processes and ensure tighter quality control, cost efficiency, and the ability to be flexible with client requirements. Gulf Craft has grown into one of a handful of manufacturers in the world with the skill and capacity to produce luxury super-yachts of more than 100 feet in length, and to embed in all its craft the latest technologies to meet challenging design and performance requirements.

Above all, Gulf Craft's vision is to deliver unforgettable boating experiences. This means not only being at the forefront of our industry, but that we are also known for providing innovation and quality without the price premium. Professional and business integrity is key to this vision. Diligent environmental and social responsibility policies and practices demonstrate our care towards our clients, partners, suppliers, staff and ultimately the community in which we operate.

The result is that Majesty owners are today cruising four continents with the resilient confidence in a yard that's committed to sustainably growing its market by selling its yachts at sea.

